

**FAMILY - D
CONTROL
HANDWHEELS**



 **ROLLMEX**

2 SPOKE CONTROL HANDWHEEL

D205



Material:

Reinforced and stabilised polyamide.
Oils and greases resistant.

Surface:

Satin.

Colour:

Black (RAL 9011).

Central Cap:

Grey polyamide (RAL 7035 cod. 13).

Alternative Cap Colour:

Orange (RAL 2004 cod. 02)

Blue (RAL 5015 cod. 07)

Yellow (RAL 1021 cod. 10)

Red (RAL 3000 cod. 16)

Green (RAL 6024 cod. 17)

Black (RAL 9011 cod. 01)

Main Insert:

Zinc plated steel insert with smooth through-hole (H10 tolerance).

Hub:

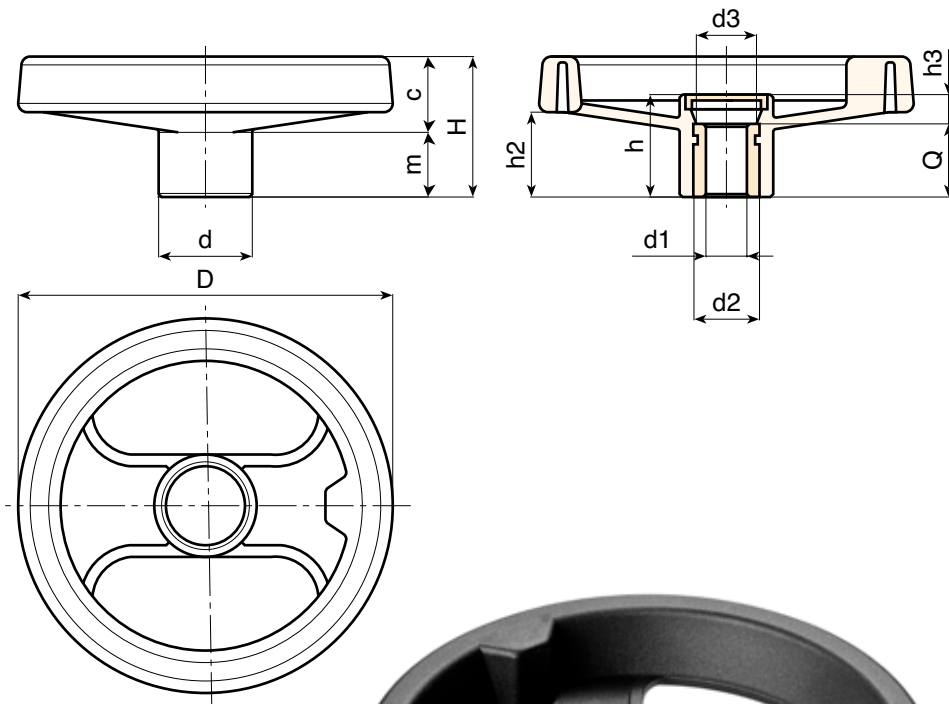
Solid hub.

(*) Hollow underneath hub.

For fixing system, or execution of keyway or square holes, please refer to the technical notes attached to the catalogue.

SPECIAL REQUEST:

- It's possible to supply the inserts with d1 bore by customer design, on request and for quantities.
- It's possible to supply the inserts in different material and treatment-finishes, on request and for quantities.
- It's possible to supply the products with colours (reduced range) as shown in the table at page D-19, on request and for quantities.



Version with zinc plated insert and H10 tolerance bore

Art.	D	H	h	d	m	c	h2	h3	d3	Dm	d1 H10	Q	g
D205080.TP0501P	80	34	26	24,5	16	18	20	6	16	12	05	20	94
D205100.TP0501P	99	43	33	28	20	23	26,5	9	16	16	05	24	152
D205130.TD0501P	129	50	36	32	21	29	32	12	26	18	05	24	240
D205160.TD0801P	159	57	40,5	40	22	35	34	8,5	26	22	08	32	390
D205200.TD0801P	198	61,5	39,5	51	17,5	44	33	7,5	26	22	(*) 08	32	630
D205250.TD0801P	252	70	47	55,5	24	46	39	11	24	28	(*) 08	36	920
D205350.TD0801P	346	80	49,5	67,5	24	56	43,5	17,5	35	30	(*) 08	32	1530

Attention: bore d1 (H10 tolerance) could be produced by request, with 50 pieces minimum.

Dm = It's possible to increase the hole, by boring, until Dm (enlarge).

Version with black-oxide insert and H7 tolerance bore

Art.	D	H	h	d	m	c	h2	h3	d3	Dm	d1 H7	Q	g
D205080.TD..01PZB	80	34	26	24,5	16	18	20	6	16	12	A.R.	20	94
D205100.TD..01PZB	99	43	33	28	20	23	26,5	9	16	16	A.R.	24	152
D205130.TD..01PZB	129	50	36	32	21	29	32	12	26	18	A.R.	24	240
D205160.TD..01PZB	159	57	40,5	40	22	35	34	8,5	26	22	A.R.	32	390
D205200.TD..01PZB	198	61,5	39,5	51	17,5	44	33	7,5	26	22	(*) A.R.	32	630
D205250.TD..01PZB	252	70	47	55,5	24	46	39	11	24	28	(*) A.R.	36	920
D205350.TD..01PZB	346	80	49,5	67,5	24	56	43,5	17,5	35	30	(*) A.R.	32	1530

Attention: replace the two places in the code .. with the hole diameter required - 50 pieces minimum.

Dm = It's possible to increase the hole, by boring, until Dm (enlarge). **A.R.** = By request

Presumable presence in the stock in %

() 90% () 40% () 5% ()



D206

D209-D210-D211-BASE



PA6
+GF

UL94
HB

**Material:**

Reinforced and stabilised polyamide.
Oils and greases resistant.

Surface: Satin.

Colour: Black (RAL 9011).

Central Cap:

Grey polyamide (RAL 7035 cod. 13).

Alternative Cap Colour:

Orange (RAL 2004 cod. 02)

Blue (RAL 5015 cod. 07)

Yellow (RAL 1021 cod. 10)

Red (RAL 3000 cod. 16)

Green (RAL 6024 cod. 17)

Black (RAL 9011 cod. 01)

Main Insert:

Zinc plated steel insert with smooth
through-hole (H10 tolerance).

Side Insert:

Brass right through threaded bush.

Side handle:

Revolving handle M144 (pag. M-08).

Hub:

Solid hub.

(*) Hollow underneath hub.

For fixing system, or execution of keyway or
square holes, please refer to the technical
notes attached to the catalogue.

SPECIAL REQUEST:

- It's possible to supply the inserts with d1 bore by customer design, on request and for quantities.
- It's possible to supply the inserts in different material and treatment-finishes, on request and for quantities.
- It's possible to supply the products with colours (reduced range) as shown in the table at page D-19, on request and for quantities.

Version with zinc plated insert and H10 tolerance bore

	Art.	D	H	h	d	m	c	h2	h3	d3	dl	L	Dm	d1 H10	Q	g
●	D206080.TP0501P	80	34	26	24,5	16	18	20	6	16	20	56	12	05	20	125
●	D206100.TP0501P	99	43	33	28	20	23	26,5	9	16	20	56	16	05	24	182
●	D206130.TD0501P	129	50	36	32	21	29	32	12	26	21	65	18	05	24	296
●	D206160.TD0801P	159	57	40,5	40	22	35	34	8,5	26	23	76	22	08	32	458
●	D206200.TD0801P	198	61,5	39,5	51	17,5	44	33	7,5	26	23	76	22	(*) 08	32	700
●	D206250.TD0801P	252	70	47	55,5	24	46	39	11	24	25	86	28	(*) 08	36	1030
●	D206350.TD0801P	346	80	49,5	67,5	24	56	43,5	17,5	35	25	86	30	(*)(+) 08	32	1640

Attention: bore d1 (H10 tolerance) could be produced by request, with 50 pieces minimum.

Dm = It's possible to increase the hole, by boring, until Dm (enlarge).

Version with black-oxide insert and H7 tolerance bore

	Art.	D	H	h	d	m	c	h2	h3	d3	dl	L	Dm	d1 H7	Q	g
●	D206080.TD..01PZB	80	34	26	24,5	16	18	20	6	16	20	56	12	A.R.	20	125
●	D206100.TD..01PZB	99	43	33	28	20	23	26,5	9	16	20	56	16	A.R.	24	182
●	D206130.TD..01PZB	129	50	36	32	21	29	32	12	26	21	65	18	A.R.	24	296
●	D206160.TD..01PZB	159	57	40,5	40	22	35	34	8,5	26	23	76	22	A.R.	32	458
●	D206200.TD..01PZB	198	61,5	39,5	51	17,5	44	33	7,5	26	23	76	22	(*) A.R.	32	700
●	D206250.TD..01PZB	252	70	47	55,5	24	46	39	11	24	25	86	28	(*) A.R.	36	1030
●	D206350.TD..01PZB	346	80	49,5	67,5	24	56	43,5	17,5	35	25	86	30	(*) A.R.	32	1640

Attention: replace the two places in the code .. with the hole diameter required - 50 pieces minimum.

Dm = It's possible to increase the hole, by boring, until Dm (enlarge). **A.R.** = By request

Presumable presence in the stock in %

||||| ||||| () 90% () 40% () 5% ()

2 SPOKE CONTROL HANDWHEEL WITH REVOLVING HANDLE M145

D209



	Art.	D	dl	L	d1 H10	Δ g
●	D209080.TP0501P	80	20	55	05	126
●	D209100.TP0501P	99	20	55	05	185
●	D209130.TD0501P	129	23	66	05	314
●	D209160.TD0801P	159	25	76	08	467
●	D209200.TD0801P	198	25	87	08	712
●	D209250.TD0801P	252	25	87	08	1010
●	D209350.TD0801P	346	25	87	08	1620

Side handle: Revolving handle art. M145 (pag. M-14).

For further details see art. D206

2 SPOKE CONTROL HANDWHEEL WITH REVOLVING HANDLE M129

D210



	Art.	D	dl	L	d1 H10	Δ g
●	D210080.TP0501P	80	20	56	05	145
●	D210100.TP0501P	99	20	56	05	235
●	D210130.TD0501P	129	21	65	05	350
●	D210160.TD0801P	159	21	76	08	610
●	D210200.TD0801P	198	25	76	08	755
●	D210250.TD0801P	252	25	87	08	975
●	D210350.TD0801P	346	25	87	08	1630

Side handle: Revolving handle art. M129 (pag. M-10).

For further details see art. D206

2 SPOKE CONTROL HANDWHEEL WITH REVOLVING HANDLE M202

D211



	Art.	D	dl	L	d1 H10	Δ g
●	D211250.TD0801P	252	40	67	08	975
●	D211350.TD0801P	346	40	67	08	1630

Side handle: Revolving and folding handle art. M202 (pag M-18).

For further details see art. D206

BASE FOR 2 SPOKE CONTROL HANDWHEEL WITH PROVISION FOR HANDLE

D-BASE



	Art.	D	d1 H10	Δ g	Side Handle Thread
●	D80.TP0501PZ1	80	05	95	M06
●	D100.TP0501PZ1	99	05	150	M06
●	D130.TP0501PZ1	129	05	240	M08
●	D160.TD0801PZ1	159	08	390	M08
●	D200.TD0801PZ1	198	08	640	M08
●	D250.TD0801PZ1	252	08	910	M10
●	D350.TD0801PZ1	346	08	1530	M10

For further details see art. D206

Presumable presence in the stock in %

() 90% (●) 40% (●) 5% (●)

ROLLMEX

D207



2 SPOKE CONTROL HANDWHEEL WITH REVOLVING FOLDAWAY HANDLE

Material:

Reinforced and stabilised polyamide.
Oils and greases resistant.

Surface:

Satin.

Colour:

Black (RAL 9011).

Central Cap:

Grey polyamide (RAL 7035 cod. 13).

Alternative Cap Colour:

Orange (RAL 2004 cod. 02)

Blue (RAL 5015 cod. 07)

Yellow (RAL 1021 cod. 10)

Red (RAL 3000 cod. 16)

Green (RAL 6024 cod. 17)

Black (RAL 9011 cod. 01)

Main Insert:

Zinc plated steel insert with smooth through-hole (H10 tolerance).

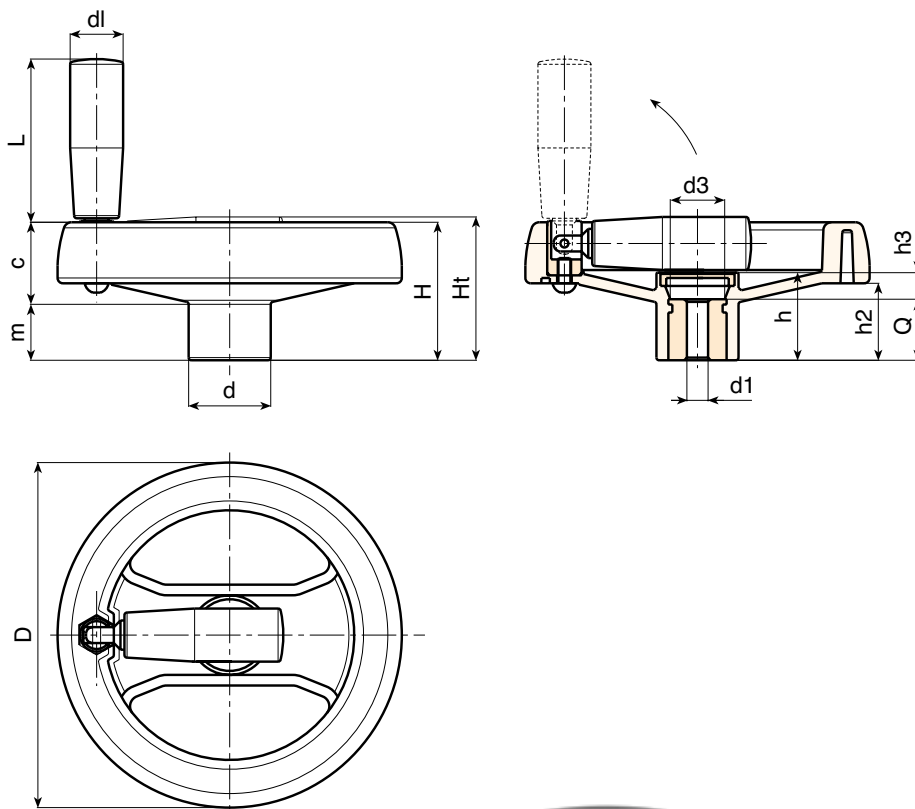
Side handle:

Flush, foldaway revolving handle, with hexagonal connection. Reinforced polyamide. Black-oxide treated internal mechanism. Fixed with black-oxide treated hexagon socket button head screw ISO 7838.

Hub:

Solid hub.

For fixing system, or execution of keyway or square holes, please refer to the technical notes attached to the catalogue.



SPECIAL REQUEST:

- It's possible to supply the inserts with d1 bore by customer design, on request and for quantities.
- It's possible to supply the inserts in different material and treatment-finishes, on request and for quantities.
- It's possible to supply the products with colours (reduced range) as shown in the table at page D-19, on request and for quantities.

Version with zinc plated insert and H10 tolerance bore

	Art.	D	H	Ht	h	d	m	c	h2	h3	d3	dl	L	Dm	d1 H10	Q	g
●	D207130.TD0501P	129	53	55	32	32	22	31	30	12	26	20	58	18	05	20	300
●	D207160.TD0501P	159	55	59	33,5	40	20,5	34,5	31	9,5	26	25	71	22	05	24	450
●	D207350.TD0801P	346	80	86	49,5	67,5	24	56	43,5	17,5	35	40	64	30	08	32	1650

Attention: bore d1 (H10 tolerance) could be produced by request, with 50 pieces minimum.

Dm = It's possible to increase the hole, by boring, until Dm (enlarge).

Version with black-oxide insert and H7 tolerance bore

	Art.	D	H	Ht	h	d	m	c	h2	h3	d3	dl	L	Dm	d1 H7	Q	g
●	D207130.TD..01PZB	129	53	55	32	32	22	31	30	12	26	20	58	18	A.R.	20	300
●	D207160.TD..01PZB	159	55	59	33,5	40	20,5	34,5	31	9,5	26	25	71	22	A.R.	24	450
●	D207350.TD..01PZB	346	80	86	49,5	67,5	24	56	43,5	17,5	35	40	64	30	A.R.	32	1650

Attention: replace the two places in the code .. with the hole diameter required - 50 pieces minimum.

Dm = It's possible to increase the hole, by boring, until Dm (enlarge). **A.R.** = By request

Presumable presence in the stock in %

||||| **ROLLMEX** ||||| () 90% () 40% () 5% ()

"EUROMODEL" 2 SPOKE CONTROL HANDWHEEL WITH REVOLVING FOLDAWAY HANDLE

D207200



Material:

Reinforced and stabilised polyamide.
Oils and greases resistant.

Surface:

Satin.

Colour:

Black (RAL 9011).

Central Cap:

Grey polyamide (RAL 7035 cod. 13).

Alternative Cap Colour:

Orange (RAL 2004 cod. 02)

Blue (RAL 5015 cod. 07)

Yellow (RAL 1021 cod. 10)

Red (RAL 3000 cod. 16)

Green (RAL 6024 cod. 17)

Black (RAL 9011 cod. 01)

Main Insert:

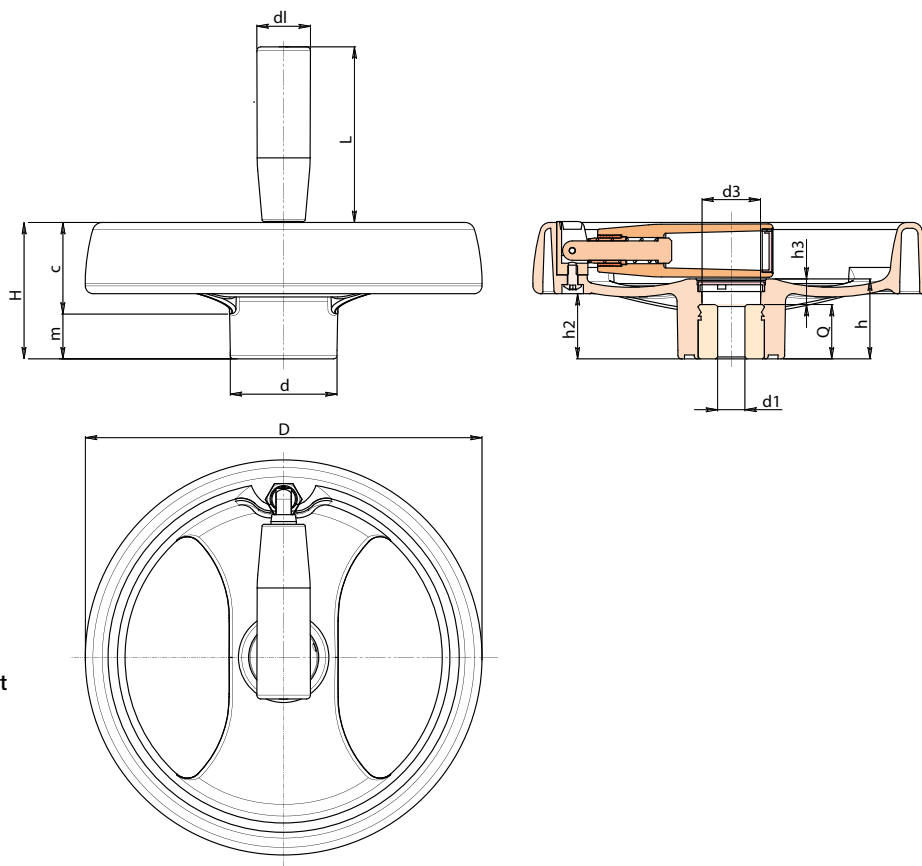
Zinc plated steel insert with smooth
through-hole (H10 tolerance).

Side handle:

Flush, foldaway revolving handle, with
hexagonal connection. Reinforced polyamide.
Black-oxide treated internal mechanism.

Fixed with black-oxide treated hexagon socket
button head screw ISO 7838.

*For fixing system, or execution of keyway or
square holes, please refer to the technical
notes attached to the catalogue.*



SPECIAL REQUEST:

- It's possible to supply the inserts with d1 bore by customer design, on request and for quantities.
- It's possible to supply the inserts in different material and treatment-finishes, on request and for quantities.
- It's possible to supply the products with colours (reduced range) as shown in the table at page D-19, on request and for quantities.



Version with zinc plated insert and H10 tolerance bore

Art.	D	H	h	d	m	c	h3	d3	dl	L	Dm	d1 H10	Q	g
D207200.TD0501P	200	69	41	54	23	46	13	30	27	91	24	05	28	660

Attention: bore d1 (H10 tolerance) could be produced by request, with 50 pieces minimum.

Dm = It's possible to increase the hole, by boring, until Dm (enlarge).

Version with black-oxide insert and H7 tolerance bore

Art.	D	H	h	d	m	c	h3	d3	dl	L	Dm	d1 H7	Q	g
D207200.TD..01PZB	200	69	41	54	23	46	13	30	27	91	24	A.R.	28	660

Attention: replace the two places in the code .. with the hole diameter required - 50 pieces minimum.

Dm = It's possible to increase the hole, by boring, until Dm (enlarge). **A.R.** = By request

Presumable presence in the stock in %

() 90% () 40% () 5% ()



2 SPOKE CONTROL HANDWHEEL WITH REVOLVING FOLDING HANDLE

Material:

Reinforced and stabilised polyamide.
Oils and greases resistant.

Surface: Satin.

Colour: Black (RAL 9011).

Central Cap:

Grey polyamide (RAL 7035 cod. 13).

Alternative Cap Colour:

Orange (RAL 2004 cod. 02)
Blue (RAL 5015 cod. 07)
Yellow (RAL 1021 cod. 10)
Red (RAL 3000 cod. 16)
Green (RAL 6024 cod. 17)
Black (RAL 9011 cod. 01)

Main Insert:

Zinc plated steel insert with smooth
through-hole (H10 tolerance).

Side Insert:

Brass right through threaded bush.

(+) Black-oxide treated steel insert with hexagonal
threaded through hole. Fixed with black-oxide
treated hexagon socket button head screw ISO
7838.

Side handle:

Revolving and folding handle M136 (pag. M-16).

Hub:

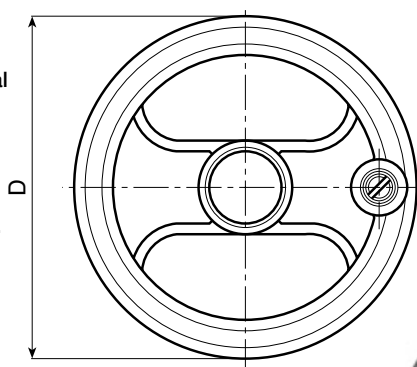
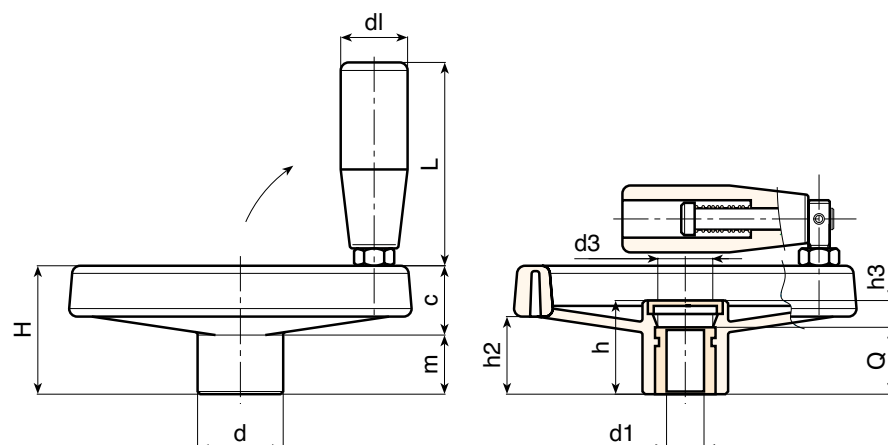
Solid hub.

(*) Hollow underneath hub.

For fixing system, or execution of keyway or
square holes, please refer to the technical notes
attached to the catalogue

SPECIAL REQUEST:

- It's possible to supply the inserts with d1 bore by customer design, on request and for quantities.
- It's possible to supply the inserts in different material and treatment-finishes, on request and for quantities.
- It's possible to supply the products with colours (reduced range) as shown in the table at page D-19, on request and for quantities.



Version with zinc plated insert and H10 tolerance bore

	Art.	D	H	h	d	m	c	h2	h3	d3	dl	L	Dm	d1 H10	Q	g
●	D208080.TP0501P	80	34	26	24,5	16	18	20	6	16	20	56	12	05	20	135
●	D208100.TP0501P	99	43	33	28	20	23	26,5	9	16	20	56	16	05	24	192
●	D208130.TD0501P	129	50	36	32	21	29	32	12	26	25	76	18	05	24	311
●	D208160.TD0801P	159	57	40,5	40	22	35	34	8,5	26	25	76	22	08	32	460
●	D208200.TD0801P	198	61,5	39,5	51	17,5	44	33	7,5	26	25	76	22	(*) 08	32	704
●	D208250.TD0801P	252	70	47	55,5	24	46	39	11	24	26	97	28	(*) 08	36	1080
●	D208350.TD0801P	346	80	49,5	67,5	24	56	43,5	17,5	35	26	97	30	(*)(+) 08	32	1690

Attention: bore d1 (H10 tolerance) could be produced by request, with 50 pieces minimum.

Dm = It's possible to increase the hole, by boring, until Dm (enlarge).

Version with black-oxide insert and H7 tolerance bore

	Art.	D	H	h	d	m	c	h2	h3	d3	dl	L	Dm	d1 H7	Q	g
●	D208080.TD..01PZB	80	34	26	24,5	16	18	20	6	16	20	56	12	A.R.	20	135
●	D208100.TD..01PZB	99	43	33	28	20	23	26,5	9	16	20	56	16	A.R.	24	192
●	D208130.TD..01PZB	129	50	36	32	21	29	32	12	26	25	76	18	A.R.	24	311
●	D208160.TD..01PZB	159	57	40,5	40	22	35	34	8,5	26	25	76	22	A.R.	32	460
●	D208200.TD..01PZB	198	61,5	39,5	51	17,5	44	33	7,5	26	25	76	22	(*) A.R.	32	704
●	D208250.TD..01PZB	252	70	47	55,5	24	46	39	11	24	26	97	28	(*) A.R.	36	1080
●	D208350.TD..01PZB	346	80	49,5	67,5	24	56	43,5	17,5	35	26	97	30	(*)(+) A.R.	32	1690

Attention: replace the two places in the code .. with the hole diameter required - 50 pieces minimum.

Dm = It's possible to increase the hole, by boring, until Dm (enlarge). **A.R.** = By request

Presumable presence in the stock in %

||||| **ROLLMEX** ||||| () 90% () 40% () 5% ()

LOCKING FLANGE FOR POSITIONING (ACCESSORY FOR D601 - D602 - D603 - D604)

DFLAN



PS

UL94
HB



Material:

Impact resistant Polystyrene.

Surface:

Glossy.

Colour:

Black (RAL 9011).

Holes:

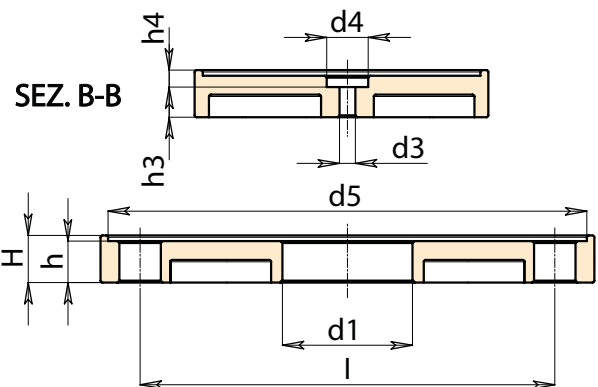
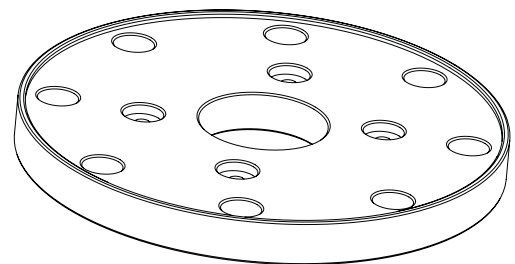
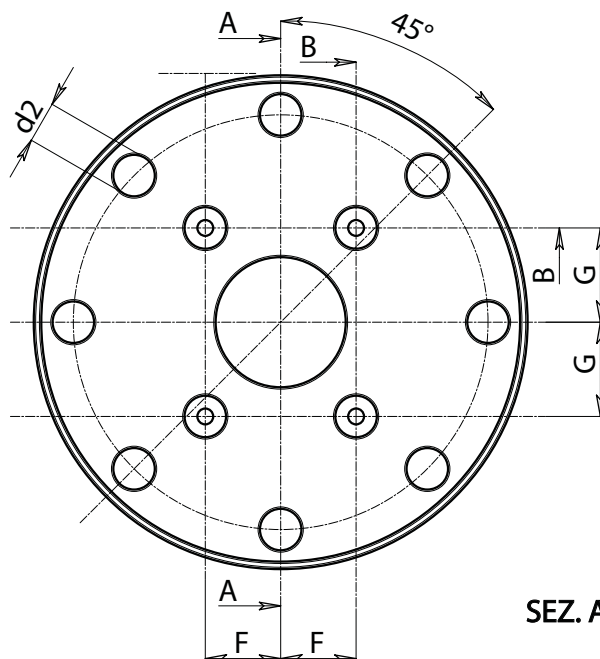
Through holes obtained by moulding the plastic. The holes marked d2 cannot be modified. It is possible to change both the diameter and positioning of the holes marked d1, d3, d4.

Fixing:

Fastening screws not supplied.

SPECIAL REQUESTS:

- Upon request and for special quantities, customised used position and diameter of the holes d1,d3,d4.



	Art.	D	H	h	h3	h4	I	F	G	d2	d3	d4	d5	d1	g
●	DFLAN.T131X34,5X4,2	131	12,5	11	8	3	110	20	25	11	4,5	11	127	34,5	80
●	DFLAN.T131X.....	131	12,5	11	A.R.	A.R.	110	A.R.	A.R.	11	A.R.	A.R.	127	A.R.	-

A.R. = By request

Presumable presence in the stock in %

() 90% (●) 40% (●) 5% (●) |||||||||||||||| **ROLLMEX** ||||||||||||||||

D601

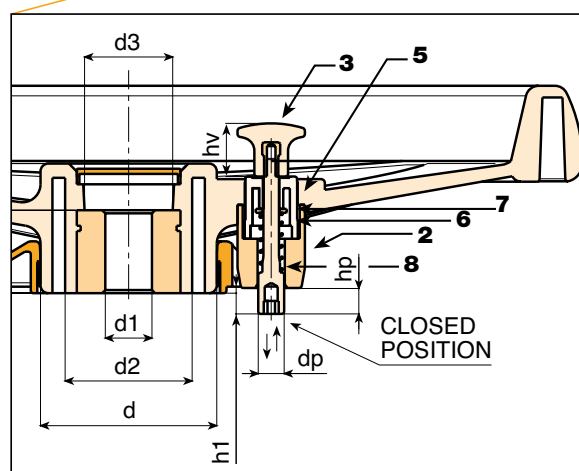
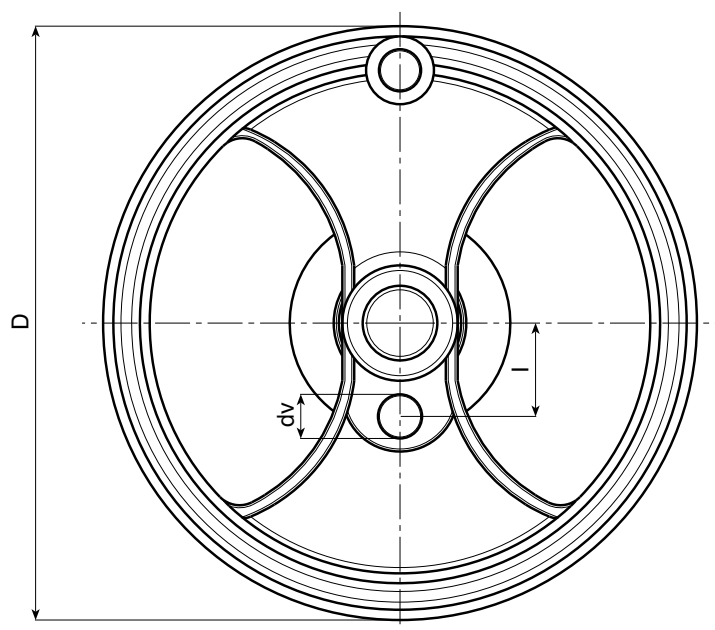
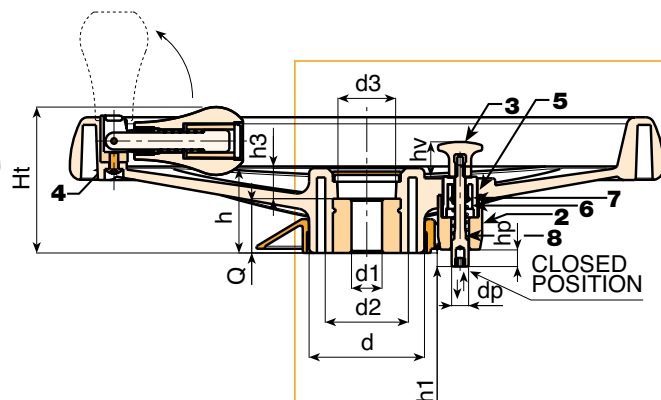
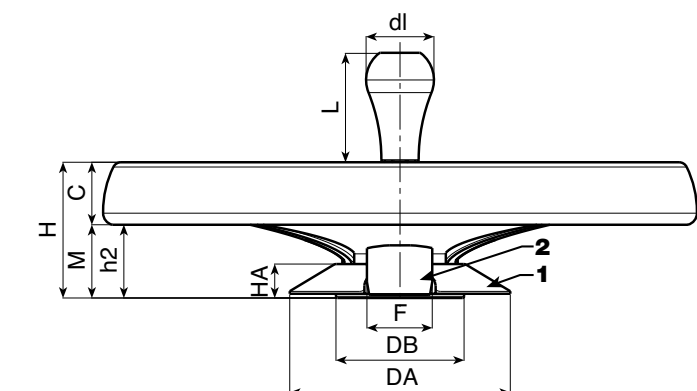


PA6
+GF

UL94
HB



2 SPOKE CONTROL HANDWHEEL WITH REVOLVING FOLDAWAY HANDLE AND LOCKING PISTON



art. D601

This type of product is an evolution of our traditional handwheel D207-350. By simply adding a special assembly kit this product can be adapted for use in a special market sector: that of compact shelving (sliding storage systems on rails).

This handgrip is suitable for handling shelving on rails. A locking device or piston is used to lock, stop, position the shelving units in specific positions.



	Art.	D	H	Ht	h	d	M	C	h2	h3	d2	d3	Dm	d1	H10	Q	g
●	D601350.TD..01P	346	80	86	49,5	67,5	24	56	43,5	17,5	49	35	28	A.R.	32	1800	

I	dv	hv	h1	dp	hp	DA	HA	DB	F
55	20	21	8	10	10	131	20	76	38

Dm = It's possible to increase the hole, by boring, until Dm (enlarge). A.R. = By request

Presumable presence in the stock in %

||||| ROLLMEX ||||| () 90% () 40% () 5% ()

2 SPOKE CONTROL HANDWHEEL WITH REVOLVING HANDLE AND LOCKING PISTON

D602



Material:

Reinforced and stabilised polyamide. Oils and greases resistant.

Surface: Satin.

Colour: Black (RAL 9011).

Central Cap: Grey polyamide (RAL 7035 cod. 13).

Alternative Cap Colour:

Orange (RAL 2004 cod. 02)

Blue (RAL 5015 cod. 07)

Yellow (RAL 1021 cod. 10)

Red (RAL 3000 cod. 16)

Green (RAL 6024 cod. 17)

Black (RAL 9011 cod. 01)

Locking Piston Kit:

(1) PA6+GF hole cover ring. Black (RAL 9011).

Push-fit assembly. Removable.

(2) PA6+GF piston holder. Black (RAL 9011). Assembly with two

self-tapping, galvanised steel screws, screwdriver head 3.5x30.

(3) PA6+GF gear stick d. 26 with M4 brass female threaded insert and positioning brackets.

Black (RAL 9011).

(5) PA6+GF gear stick support with positioner. Black (RAL 9011).

(6) Galvanised steel return spring.

(7) Galvanised steel washer.

(8) Galvanised steel locking piston. Seat for Allen wrench no. 5 for fastening. Piston stroke 10 mm.

Useful projection from handwheel 8 mm.

Inserts:

(0) Customised galvanised steel through-hole insert.

(4) Black-oxide treated hexagon socket button head screw ISO 7838 for fastening handle.

(9) (art. D602) Black-oxide treated steel insert with hexagonal threaded through-hole.

Side Handle:

(art. D601) Flush, foldaway revolving handle, with hexagonal connection. Made from reinforced

polyamide (shape same as art. M202). Black-oxide treated internal mechanism.

Fixing by means of black-oxide treated hexagon socket button head screw ISO 7838.

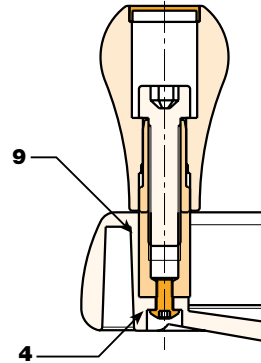
Grey polyamide push fit cap (RAL 7035 code 13).

(art. D602) Revolving handle Art. M202 (see Chapter M on page 18).

For fixing system, or execution of keyway or square holes, please refer to the technical notes attached to the catalogue.

SPECIAL REQUEST:

- It's possible to supply the inserts with d1 bore by customer design, on request and for quantities.
- It's possible to supply the inserts in different material and treatment-finishes, on request and for quantities.
- It's possible to supply the products with colours (reduced range) as shown in the table at page D-19, on request and for quantities.



art. D602



	Art.	D	H	Ht	h	d	M	C	h2	h3	d2	d3	Dm	d1	H10	Q	g
●	D602350.TD..01P	346	80	86	49,5	67,5	24	56	43,5	17,5	49	35	28	A.R.		32	1800

I	dv	hv	h1	dp	hp	DA	HA	DB	F
55	20	21	8	10	10	131	20	76	38

Dm = It's possible to increase the hole, by boring, until Dm (enlarge). **A.R.** = By request

Presumable presence in the stock in %

(■) 90% (●) 40% (●) 5% (●) | **ROLLMEX** |

D603

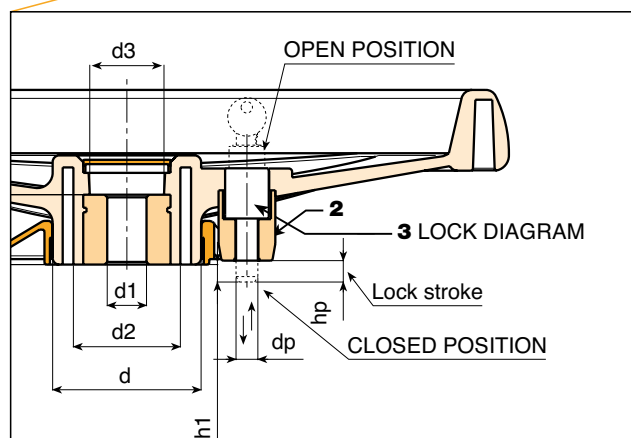
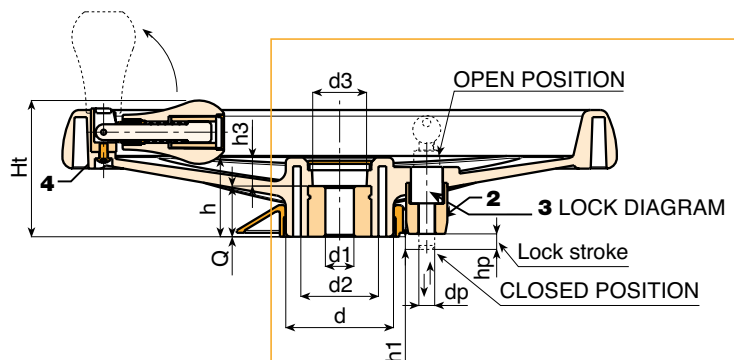
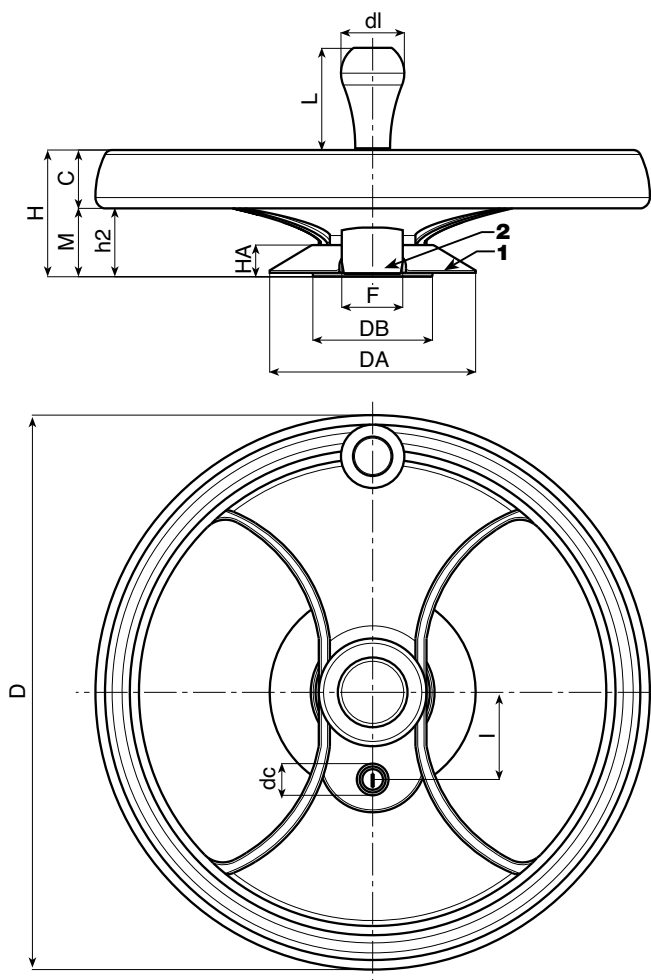


PA6
+GF

UL94
HB



2 SPOKE CONTROL HANDWHEEL WITH REVOLVING FOLDAWAY HANDLE AND KEY LOCK



art. D603

This type of product is an evolution of our traditional handwheel D207-350. By simply adding a special assembly kit this product can be adapted for use in a special market sector: that of compact shelving (sliding storage systems on rails). This handgrip is suitable for handling shelving on rails. A locking device or piston is used to lock, stop, position the shelving units in specific positions.



	Art.	D	H	Ht	h	d	M	C	h2	h3	d2	d3	Dm	d1	H10	Q	g
●	D603350.TD..01P	346	80	86	49,5	67,5	24	56	43.5	17,5	49	35	28	A.R.	32	1800	

I	dc	h1	dp	hp	DA	HA	DB	F
55	20	8	10	10	131	20	76	38

Dm = It's possible to increase the hole, by boring, until Dm (enlarge). A.R. = By request

Presumable presence in the stock in %

||||| ||||| () 90% () 40% () 5% ()

2 SPOKE CONTROL HANDWHEEL WITH REVOLVING HANDLE AND KEY LOCK

D604



Material:

Reinforced and stabilised polyamide. Oils and greases resistant.

Surface: Satin.

Colour: Black (RAL 9011).

Central Cap: Grey polyamide (RAL 7035 cod. 13).

Alternative Cap Colour:

Orange (RAL 2004 cod. 02)

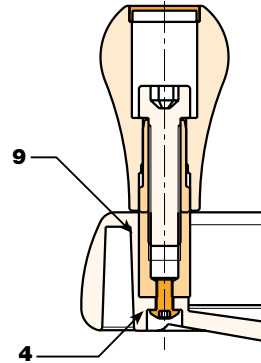
Blue (RAL 5015 cod. 07)

Yellow (RAL 1021 cod. 10)

Red (RAL 3000 cod. 16)

Green (RAL 6024 cod. 17)

Black (RAL 9011 cod. 01)



Clamping Lock Kit:

(1) PA6+GF hole cover ring. Black (RAL 9011).

Push-fit assembly. Removable.

(2) PA6+GF piston holder. Black (RAL 9011). Assembly using two self-tapping, galvanised steel screws, screwdriver head 3.5x30.

(3) Nickel plated lock. Two numbered keys provided. Key can be removed from either position. To close handwheel push and turn the key 90°. Lock stroke 10 mm. Useful projection of pin from handwheel 8 mm. Keys supplied secured to the handwheel rim.

Inserts:

(1) Customised galvanised steel through-hole insert.

(4) Black-oxide treated hexagon socket button head screw ISO 7838 for fastening handle.

(9) (art. D604) Black-oxide treated steel insert with hexagonal threaded through-hole.

Side Handle:

(art. D601) Flush, foldaway revolving handle, with hexagonal connection. Made from reinforced polyamide (shape same as art. M202). Black-oxide treated internal mechanism. Fixing by means of black-oxide treated hexagon socket button head screw ISO 7838. Grey polyamide push fit cap (RAL 7035 code 13).

(art. D604) Revolving handle Art. M202 (see Chapter M on page 18).



For fixing system, or execution of keyway or square holes, please refer to the technical notes attached to the catalogue.

SPECIAL REQUEST:

- It's possible to supply the inserts with d1 bore by customer design, on request and for quantities.
- It's possible to supply the inserts in different material and treatment-finishes, on request and for quantities.
- It's possible to supply the products with colours (reduced range) as shown in the table at page D-19, on request and for quantities.

art. D604



Art.	D	H	Ht	h	d	M	C	h2	h3	d2	d3	Dm	d1	H10	Q	g
● D604350.TD..01P	346	80	86	49,5	67,5	24	56	43,5	17,5	49	35	28	A.R.		32	1800

I	dc	h1	dp	hp	DA	HA	DB	F
55	20	8	10	10	131	20	76	38

Dm = It's possible to increase the hole, by boring, until Dm (enlarge). **A.R.** = By request

Presumable presence in the stock in %

(■) 90% (●) 40% (●) 5% (●) | **ROLLMEX** |

D454



PA6
+GF

UL94
HB



"EUROMODEL" 4 ARMS CONTROL HANDWHEEL

PROTECTED
MODEL

Material:

Reinforced and stabilised polyamide.
Oils and greases resistant.

Surface:

Satin.

Colour:

Black (RAL 9011).

Central Cap:

Grey polyamide (RAL 7035 cod. 13).

Alternative Cap Colour:

Orange (RAL 2004 cod. 02)

Blue (RAL 5015 cod. 07)

Yellow (RAL 1021 cod. 10)

Red (RAL 3000 cod. 16)

Green (RAL 6024 cod. 17)

Black (RAL 9011 cod. 01)

Main Insert:

Zinc plated steel insert with smooth
through-hole (H10 tolerance).

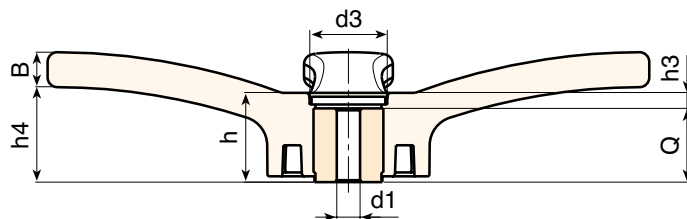
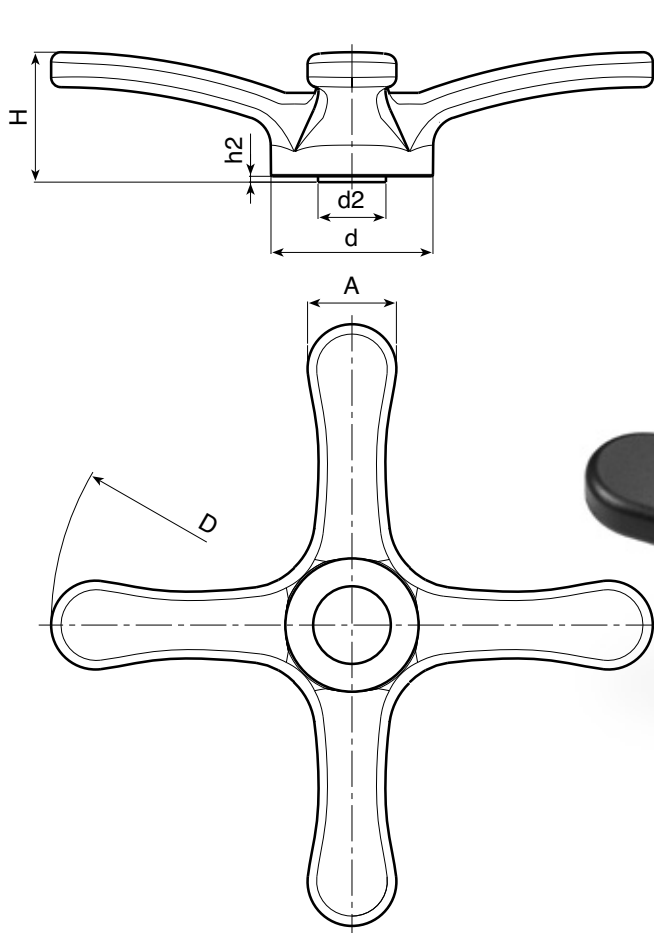
Hub:

Hollow underneath hub.

*For fixing system, or execution of keyway or
square holes, please refer to the technical
notes attached to the catalogue.*

SPECIAL REQUEST:

- It's possible to supply the inserts with d1 bore by customer design, on request and for quantities.
- It's possible to supply the inserts with threaded d1 bore, on request and for quantities.
- It's possible to supply the inserts in different material and treatment-finishes, on request and for quantities.



Version with zinc plated insert and H10 tolerance bore

	Art.	D	H	h	d	d2	A	B	h2	h3	h4	d3	Dm	d1 H10	Q	g
●	D454310.TD0801P	308	66	45,5	83	35,5	45,5	20	3	7,5	46	34	26	8	38	900

Attention: bore d1 (H10 tolerance) could be produced by request, with 100 pieces minimum.

Dm = It's possible to increase the hole, by boring, until Dm (enlarge).

Presumable presence in the stock in %

||||| ||||| () 90% (●) 40% (●) 5% (●)

3 ARMS CONTROL HANDWHEEL WITH SMOOTH OR THREADED HOLE

D214



Material:

Reinforced and stabilised polyamide.
Oils and greases resistant.

Surface:

Satin.

Colour:

Black (RAL 9011).

Central Cap:

Grey polyamide (RAL 7035 cod. 13).

Alternative Cap Colour:

Orange (RAL 2004 cod. 02)

Blue (RAL 5015 cod. 07)

Yellow (RAL 1021 cod. 10)

Red (RAL 3000 cod. 16)

Green (RAL 6024 cod. 17)

Black (RAL 9011 cod. 01)

Main Insert:

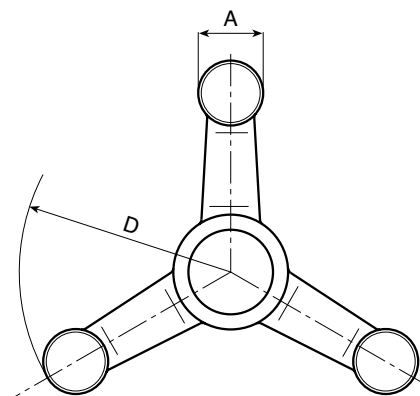
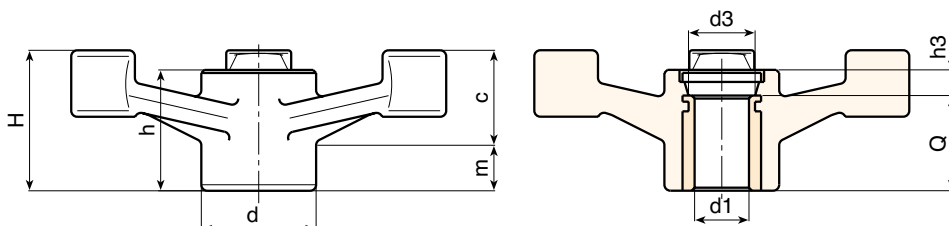
Version TD: Zinc plated steel insert with smooth through-hole (H10 tolerance).

Version TM: Zinc plated steel insert with threaded through-hole (6H tolerance).

For fixing system, or execution of keyway or square holes, please refer to the technical notes attached to the catalogue.

SPECIAL REQUEST:

- It's possible to supply the inserts with d1 bore by customer design, on request and for quantities.
- It's possible to supply the inserts in different material and treatment-finishes, on request and for quantities.
- It's possible to supply the products with orange colours, on request and for quantities. (RAL 2004 cod. 02).



Version TD with zinc plated insert and H10 tolerance bore.

	Art.	D	H	h	d	m	c	A	h3	d3	Dm	d1 H10	Q	g
●	D214140.TD0801P	137	45	39,5	38	19	26	22	7,5	26	22	8	32	200
●	D214180.TD0801P	177	56	42,5	38	20	35	23	10,5	26	22	8	32	280
●	D214220.TD0801P	221	61	46	38	22	39	25	14	26	22	8	32	340

Attention: bore d1 (H10 tolerance) could be produced by request, with 100 pieces minimum.

Dm = It's possible to increase the hole, by boring, until Dm (enlarge).

Version TM with zinc plated insert and 6H tolerance threaded bore .

	Art.	D	H	h	d	m	c	A	h3	d3	d1 6H	Q	g
●	D214140.TM1201P	137	45	39,5	38	19	26	22	7,5	26	M12	32	197
●	D214140.TM1601P	137	45	39,5	38	19	26	22	7,5	26	M16	32	193
●	D214180.TM1601P	177	56	42,5	38	20	35	23	10,5	26	M16	32	275
●	D214180.TM1801P	177	56	42,5	38	20	35	23	10,5	26	M18	32	270
●	D214220.TM1401P	221	61	46	38	22	39	25	14	26	M14	32	335
●	D214220.TM1601P	221	61	46	38	22	39	25	14	26	M16	32	333
●	D214220.TM1801P	221	61	46	38	22	39	25	14	26	M18	32	330

Presumable presence in the stock in %

() 90% (●) 40% (●) 5% (●)



D779



PA6
+GF

UL94
HB



LIGHT CONTROL HANDWHEEL WITH REVOLVING HANDLE

Material:

Reinforced polyamide.
Oils and greases resistant.

Surface:

Satin.

Colour:

Black (RAL 9011).

Main Insert:

Zinc plated steel insert with smooth
through-hole (H10 tolerance).

Side Insert:

Brass right through threaded bush.

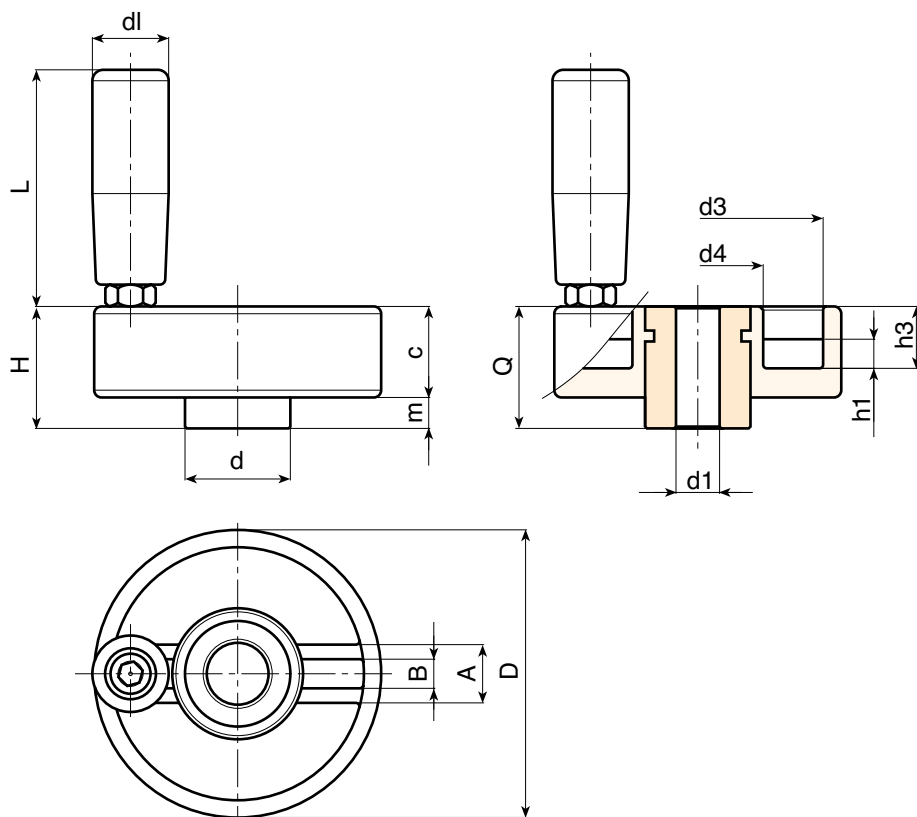
Side handle:

Revolving handle M144 (pag. M-08).

*For fixing system, or execution of keyway or
square holes, please refer to the technical
notes attached to the catalogue.*

SPECIAL REQUEST:

- It's possible to supply the inserts with d1 bore by customer design, on request and for quantities.
- It's possible to supply the inserts in different material and treatment-finishes, on request and for quantities.
- It's possible to supply the products with colours (reduced range) as shown in the table at page D-19, on request and for quantities.



Version with zinc plated insert and H10 tolerance bore

	Art.	D	H	d	c	m	h1	h3	A	B	d3	d4	dl	L	Dm	d1 H10	Q	g
●	D77980.TP0501P	80	34	29	25	9	8	17	16	7,5	69	36	21	65	20	8	34	285

Attention: bore d1 (H10 tolerance) could be produced by request, with 50 pieces minimum.

Dm = It's possible to increase the hole, by boring, until Dm (enlarge).

Version with black-oxide insert and H7 tolerance bore

	Art.	D	H	d	c	m	h1	h3	A	B	d3	d4	dl	L	Dm	d1 H7	Q	g
●	D77980.TD..01PZB	80	34	29	25	9	8	17	16	7,5	69	36	21	65	20	A.R.	34	-

Attention: replace the two places in the code .. with the hole diameter required - 50 pieces minimum.

Dm = It's possible to increase the hole, by boring, until Dm (enlarge). **A.R.** = By request

Presumable presence in the stock in %

||||| ||||| () 90% () 40% () 5% ()



Material:

Reinforced polyamide.
Oils and greases resistant.

Surface:

Satin.

Colour:

Black (RAL 9011).

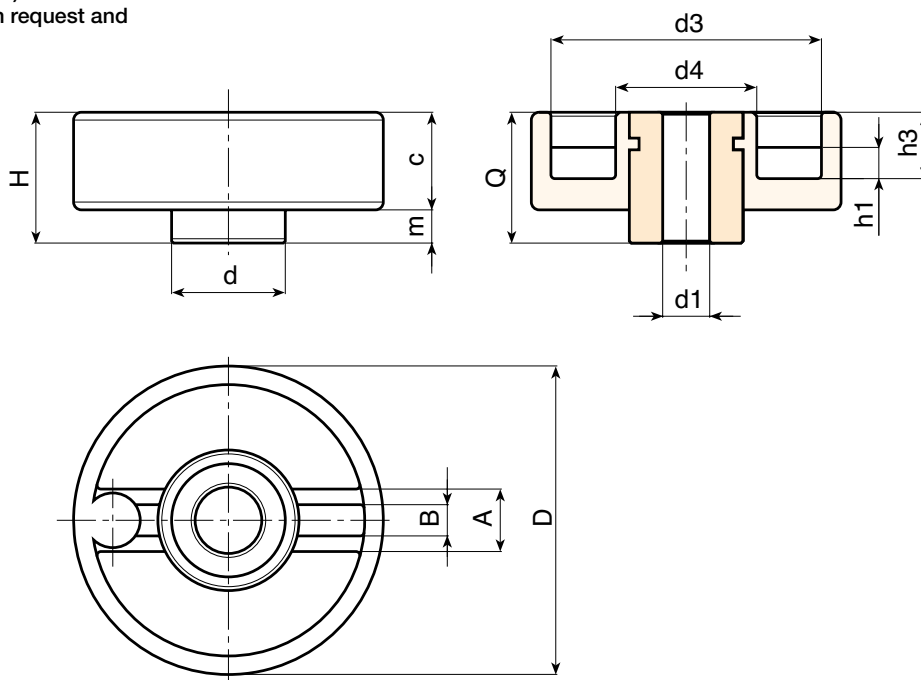
Main Insert:

Zinc plated steel insert with smooth through-hole (H10 tolerance).

For fixing system, or execution of keyway or square holes, please refer to the technical notes attached to the catalogue.

SPECIAL REQUEST:

- It's possible to supply the inserts with d1 bore by customer design, on request and for quantities.
- It's possible to supply the inserts in different material and treatment-finishes, on request and for quantities.
- It's possible to supply the products with colours (reduced range) as shown in the table at page D-19, on request and for quantities.



Version with zinc plated insert and H10 tolerance bore

	Art.	D	H	d	c	m	h1	h3	A	B	d3	d4	Dm	d1 H10	Q	g
●	D78280.TD0801P	80	34	29	25	9	8	17	16	7,5	69	36	20	8	34	230

Attention: bore d1 (H10 tolerance) could be produced by request, with 50 pieces minimum.

Dm = It's possible to increase the hole, by boring, until Dm (enlarge).

Version with black-oxide insert and H7 tolerance bore

	Art.	D	H	d	c	m	h1	h3	A	B	d3	d4	Dm	d1 H7	Q	g
●	D78280.TD..01PZB	80	34	29	25	9	8	17	16	7,5	69	36	20	A.R.	34	-

Attention: replace the two places in the code .. with the hole diameter required - 50 pieces minimum.

Dm = It's possible to increase the hole, by boring, until Dm (enlarge). **A.R.** = By request

Presumable presence in the stock in %

() 90% (●) 40% (●) 5% (●) | ROLLMEX |

D161



PA6
+GF

UL94
HB



TAPERED HANDWHEEL WITH SMOOTH OR THREADED HOLE

Material:

Reinforced polyamide.
Oils and greases resistant.

Surface:

Satin.

Colour:

Black (RAL 9011).

Main Insert:

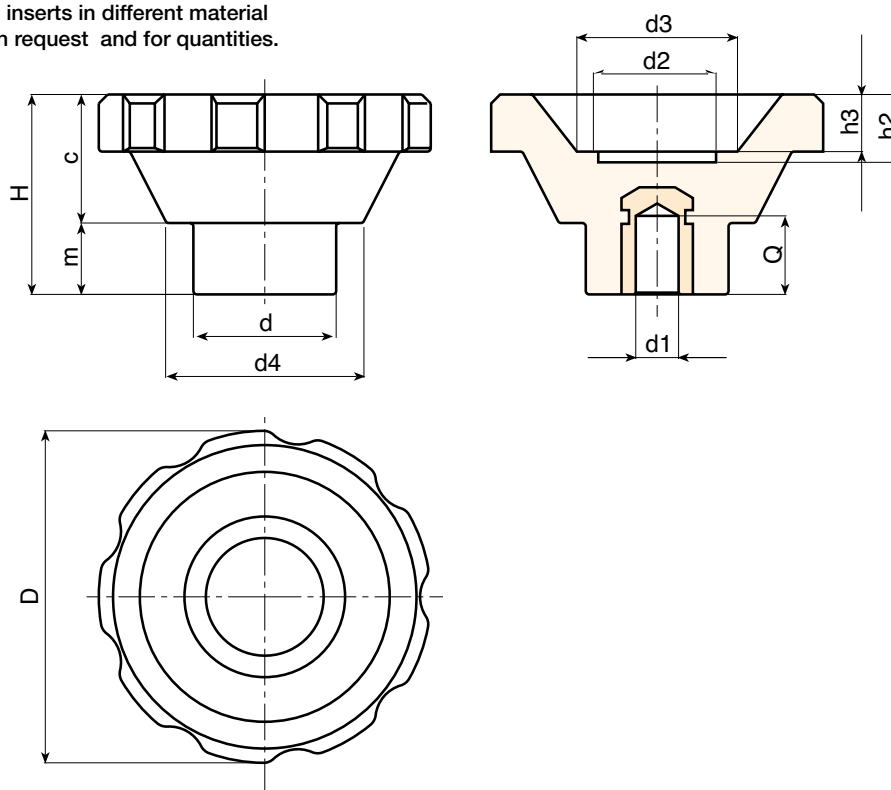
Version TD: Zinc plated steel insert with smooth through-hole (H10 tolerance).

Version TM: Zinc plated steel insert with threaded through-hole (6H tolerance).

For fixing system, or execution of keyway or square holes, please refer to the technical notes attached to the catalogue.

SPECIAL REQUEST:

- It's possible to supply the inserts with d1 bore by customer design, on request and for quantities.
- It's possible to supply the inserts in different material and treatment-finishes, on request and for quantities.



Version TD with smooth blind hole.

	Art.	D	H	d	c	m	d2	d3	d4	h2	h3	Dm	d1 H10	Q	g
●	D16195.TP0501	93	56,5	40	36,5	20	32	45	55,5	20	17	22	5	27	340

Attention: bore d1 (H10 tolerance) could be produced by request, with 50 pieces minimum.

Dm = It's possible to increase the hole, by boring, until Dm (enlarge).

Version TM with threaded blind hole.

	Art.	D	H	d	c	m	d2	d3	d4	h2	h3	d1 6H	Q	g
●	D16195.TM1201	93	56,5	40	36,5	20	32	45	55,5	20	17	M12	25	338




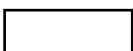








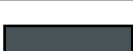
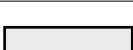


Attention: bore d1 (6H tolerance) could be produced by request, with 50 pieces minimum.

Presumable presence in the stock in %










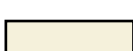


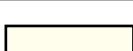

() 90% (●) 40% (●) 5% (●)

COLOUR CHART

RAL COLOURS CODING

Colour		RAL	Cod.
Black		9011	01
Orange		2004	02
Orange		2011	03
White		9010	04
Blue		5002	05
Blue		5005	06
Blue		5015	07
Blue		5018	19
Blue		5019	21
Blue		5010	22
Yellow		1007	09
Yellow		1021	10
Grey		7024	12
Grey		7035	13
Red		3000	16
Green		6024	17

OTHER COLORS

Colour		Ref.	Cod.
White		-	52
Blue		-	53
Blue		pant. 645 U	54
Blue		pant. 300	55
Grey		-	57
Grey		-	59
Grey		NCS 7500	60
Red		-	64
Red		-	65
Natural		-	66
Green		-	70
Brown		-	71
Cream		-	72
Violet		-	73

ROLLMEX OY

TAMPERE

Takojankatu 4 - 33540 TAMPERE

Puh. 010-6661122

tampere@rollmex.fi

LAHTI

Karjalankatu 21 - 15140 LAHTI

Puh. 010-6661121

lahti@rollmex.fi

WWW.ROLLMEX.FI

