

W - FAMILY METAL SERIES



ROLLMEX

FIXED METAL LEVER WITH INCLINED HANDLE

MATERIAL:

Steel with property class 5.8.

SURFACE:

Low roughness turned surface.

STANDARD COLOUR:

H - Nickel-plated (surface treatment).

ALTERNATIVE COLOUR ON REQUEST:

B - Black -oxide (surface treatment).

Z - Galvanised (surface treatment).

To be specified with the order.

HANDGRIP:

Short handle I500, reinforced polyamide, black RAL 9011 (see Chap. I page 14).

HANDGRIP FASTENING:

Push-fit. Removable.

HOLE:

VERSION W500:

Female threaded hole with tolerance class of 6g.

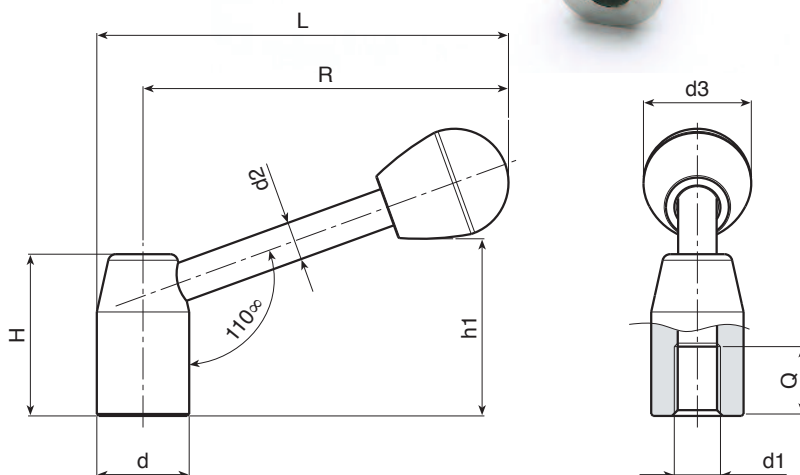
VERSION W502:

Smooth blind hole with tolerance class of H7.

For fixing systems please refer to the technical notes attached to the catalogue.

SPECIAL REQUESTS:

- It is possible to supply the levers with customised hole d1, on request and for quantities.
- It is possible to supply the handgrip with colours as shown in the table at page 19, on request and for quantities.



Version W500 with female threaded hole

Art.	d	R	L	H	Ht	h1	d2	d3	d1	Q	Weight (gr)
W500070.SM0801..	20	70	80	34	57	35	8	22	M8	15	89
W500080.SM1001..	22	80	91	38	64	42	8	22	M10	15	111
W500095.SM1201..	24	95	107	42	75	46	10	28	M12	18	160
W500110.SM1201..	28	110	124	48	84	55	12	28	M12	18	280
W500125.SM1601..	32	125	141	52	94	61	12	32	M16	23	340
W500140.SM1601..	36	140	158	58	103	71	14	32	M16	24	513
W500150.SM2001..	40	150	170	64	113	75	16	37	M20	27	687
W500170.SM2001..	45	170	192,5	70	125	86	16	37	M20	30	890

In the two points .. of the code insert the desired colour.

Version W502 with smooth blind hole

Art.	d	R	L	H	Ht	h1	d2	d3	d1 H7	Q	Weight (gr)
W502070.SD0801..	20	70	80	34	57	35	8	22	08	15	84
W502080.SD1001..	22	80	91	38	64	42	8	22	10	15	109
W502095.SD1201..	24	95	107	42	75	46	10	28	12	18	160
W502110.SD1201..	28	110	124	48	84	55	12	28	12	18	278
W502125.SD1601..	32	125	141	52	94	61	12	32	16	23	340
W502140.SD1601..	36	140	158	58	103	71	14	32	16	24	500
W502150.SD2001..	40	150	170	64	113	75	16	37	20	27	670
W502170.SD2001..	45	170	192,5	70	125	86	16	37	20	30	870

In the two points .. of the code insert the desired colour.

FIXED METAL LEVER WITH STAINLESS STEEL INCLINED HANDLE

INOX

MATERIAL:

Stainless steel (AISI 303).

SURFACE:

Low roughness turned surface.

COLOUR:

Natural.

HANDGRIP:

Short handle I500, reinforced polyamide, black RAL 9011 (see Chap. I page 14).

HANDGRIP FASTENING:

Push-fit. Removable.

HOLE:

VERSION W500 CIN:

Female threaded hole with tolerance class of 6H.

VERSION W502 CIN:

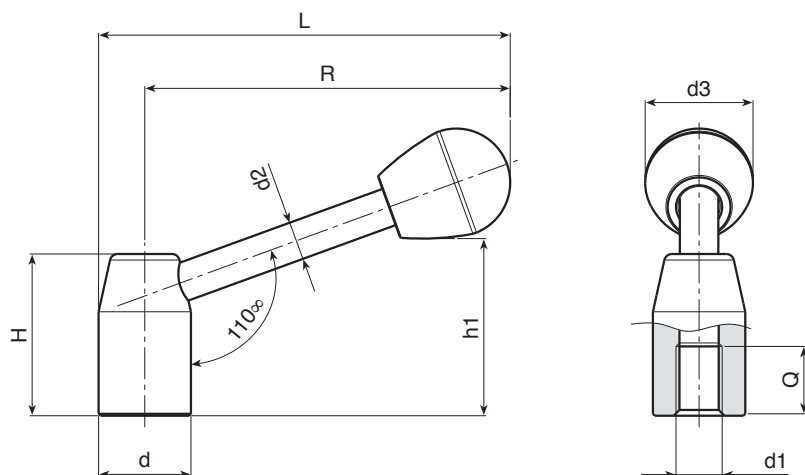
Smooth blind hole with tolerance class of H7.

For fixing systems please refer to the technical notes attached to the catalogue.



SPECIAL REQUESTS:

- It is possible to supply the levers with customised hole d1, on request and for quantities.
- It is possible to supply the handgrip with colours as shown in the table at page 19, on request and for quantities.



Version W500 CIN with female threaded hole

Art.	d	R	L	H	Ht	h1	d2	d3	d1	Q	Weight (gr)
W500080.IM1001CIN	22	80	91	38	64	42	8	22	M10	15	120
W500095.IM1201CIN	24	95	107	42	75	46	10	28	M12	18	170
W500110.IM1201CIN	28	110	124	48	84	55	12	28	M12	18	290
W500125.IM1601CIN	32	125	141	52	94	61	12	32	M16	23	350

Version W502 CIN with smooth blind hole

Art.	d	R	L	H	Ht	h1	d2	d3	d1	Q	Weight (gr)
W502080.ID1001CIN	22	80	91	38	64	42	8	22	10	15	119
W502095.ID1201CIN	24	95	107	42	75	46	10	28	12	18	168
W502110.ID1201CIN	28	110	124	48	84	55	12	28	12	18	287
W502125.ID1601CIN	32	125	141	52	94	61	12	32	16	23	350

FIXED METAL LEVER WITH HORIZONTAL HANDLE

MATERIAL:

Steel with property class 5.8.

SURFACE:

Low roughness turned surface.

STANDARD COLOUR:

H - Nickel-plated (surface treatment).

ALTERNATIVE COLOUR ON REQUEST:

B - Black-oxide (surface treatment).

Z - Galvanised (surface treatment).

To be specified with the order.

HANDGRIP:

Short handle I500, reinforced polyamide, black RAL 9011 (see Chap. I page 14).

HANDGRIP FASTENING:

Push-fit. Removable.

HOLE:

VERSION W501:

Female threaded hole with tolerance class of 6H.

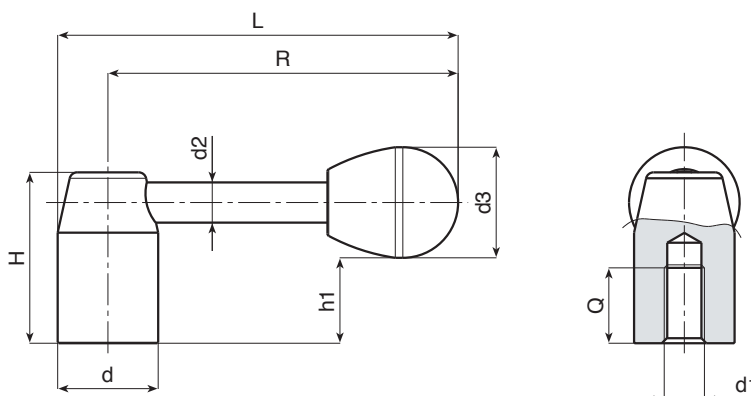
VERSION W503:

Smooth blind hole with tolerance class of H7.

For fixing systems please refer to the technical notes attached to the catalogue.

SPECIAL REQUESTS:

- It is possible to supply the levers with customised hole d1, on request and for quantities.
- It is possible to supply the handgrip with colours as shown in the table at page 19, on request and for quantities.



Version W501 with female threaded hole

Art.	d	R	L	H	Ht	h1	d2	d3	d1	Q	Weight (gr)
W501070.SM0801..	20	70	80	34	57	17	8	22	M8	17	89
W501080.SM1001..	22	80	91	38	64	20	8	22	M10	19	111
W501095.SM1201..	24	95	107	42	75	21	10	28	M12	21	160
W501110.SM1201..	28	110	124	48	84	25	12	28	M12	23	280
W501125.SM1601..	32	125	141	52	94	27	12	32	M16	25	340
W501140.SM1601..	36	141	159	58	103	31	14	32	M16	27	513
W501150.SM2001..	40	150	170	64	113	34	16	37	M20	29	687

In the two points .. of the code insert the desired colour.

Version W503 with smooth blind hole

Art.	d	R	L	H	Ht	h1	d2	d3	d1	Q	Weight (gr)
W503070.SD0801..	20	70	80	34	57	17	8	22	08	17	84
W503080.SD1001..	22	80	91	38	64	20	8	22	10	19	109
W503095.SD1201..	24	95	107	42	75	21	10	28	12	21	160
W503110.SD1201..	28	110	124	48	84	25	12	28	12	23	278
W503125.SD1601..	32	125	141	52	94	27	12	32	16	25	340
W503140.SD1601..	36	141	159	58	103	31	14	32	16	27	500
W503150.SD2001..	40	150	170	64	113	34	16	37	20	29	670

In the two points .. of the code insert the desired colour.

CYLINDRICAL FIXED METAL LEVER WITH INCLINED HANDLE AND SMOOTH HOLE

MATERIAL:

Steel with property class 5.8.

SURFACE:

Low roughness turned surface.

STANDARD COLOUR:

H - Nickel-plated (surface treatment).

ALTERNATIVE COLOUR ON REQUEST:

B - Black-oxide (surface treatment).

Z - Galvanised (surface treatment).

To be specified with the order.

HANDGRIP:

Ball grip I104 reinforced polyamide, black RAL 9011 (see Chap. I page 3).

HANDGRIP FASTENING:

Push-fit. Removable.

HOLE:

Smooth right through hole in the steel with tolerance class of H7.

CENTRE CAP:

ABS centre cap, grey (RAL 7035 code 13) for black-oxide lever version.

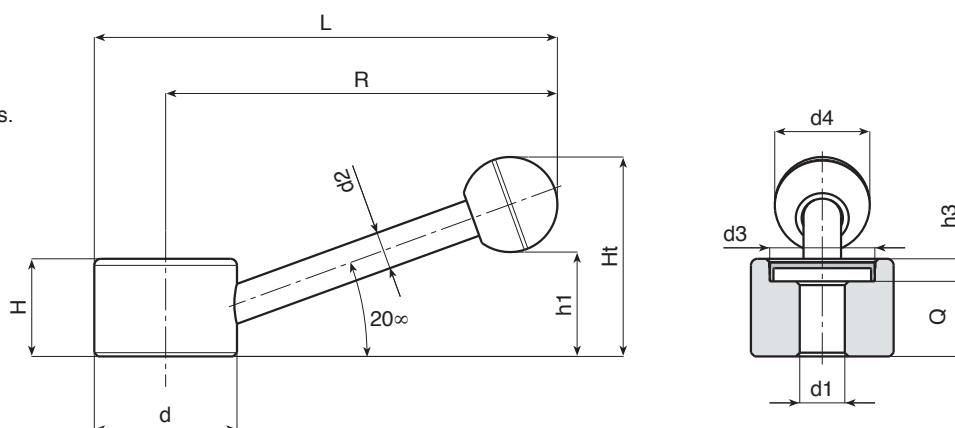
ABS centre cap, black (RAL 9011 code 01) for all other versions.

For fixing systems, or execution of tabs or square holes, please refer to the technical notes attached to the catalogue.



SPECIAL REQUESTS:

- It is possible to supply the levers with customised hole d1, on request and for quantities.
- It is possible to supply the handgrip with colours as shown in the table at page 19, on request and for quantities.



Art.	d	R	L	H	Ht	h1	h3	d2	d3	d4	d1	Q	Weight (gr)
W510082.SD1001..	30	82	97	22	43	24	6	8	22	20	D10	16	118
W510104.SD1001..	38	104	123	26	53	28	6	10	28	25	D10	20	235
W510104.SD1201..	38	104	123	26	53	28	6	10	28	25	D12	20	230
W510128.SD1401..	48	128	152	30	66	32	6	12	34	35	D14	24	434
W510128.SD1601..	48	128	141	30	66	32	6	12	34	35	D16	24	427

In the two points .. of the code insert the desired colour.

CYLINDRICAL STAINLESS STEEL FIXED LEVER WITH INCLINED HANDLE AND SMOOTH HOLE

MATERIAL:

Stainless steel (AISI 303).

SURFACE:

Low roughness turned surface.

COLOUR:

Natural.

HANDGRIP:

Ball grip I104 reinforced polyamide, black RAL 9011 (see Chap. I page 3).

HANDGRIP FASTENING:

Push-fit. Removable.

HOLE:

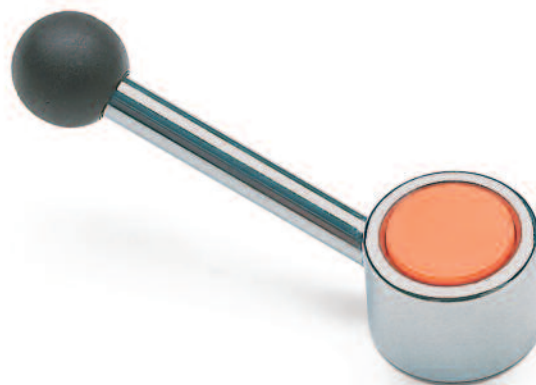
Smooth right through hole in the steel with tolerance class of H7.

CENTRE CAP:

ABS centre cap, black (RAL 9011 code 01).

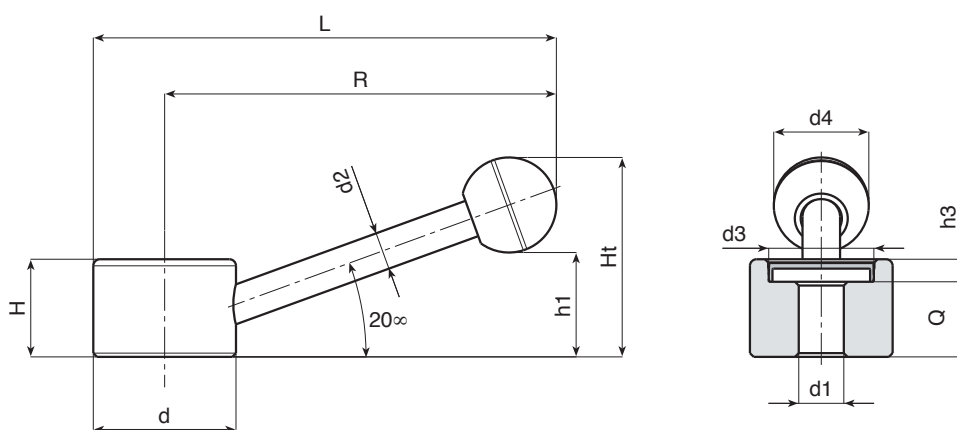
For fixing systems, or execution of tabs or square holes, please refer to the technical notes attached to the catalogue.

INOX



SPECIAL REQUESTS:

- It is possible to supply the levers with customised hole d1, on request and for quantities.
- It is possible to supply the handgrip with colours as shown in the table at page 19, on request and for quantities.



Art.	d	R	L	H	Ht	h1	h3	d2	d3	d4	d1	Q	Weight (gr)
W510082.ID1001CIN	30	82	97	22	43	24	6	8	22	20	D10	16	118
W510104.ID1001CIN	38	104	123	26	53	28	6	10	28	25	D10	20	235
W510128.ID1401CIN	48	128	152	30	66	32	6	12	34	35	D14	24	434

KNURLED METAL HANDWHEEL WITH THREADED STUD

MATERIAL:

Steel with property class 5.8.

SURFACE:

Low roughness turned surface.

STANDARD COLOUR:

H - Nickel-plated (surface treatment).

ALTERNATIVE COLOUR ON REQUEST:

Z - Galvanised (surface treatment).

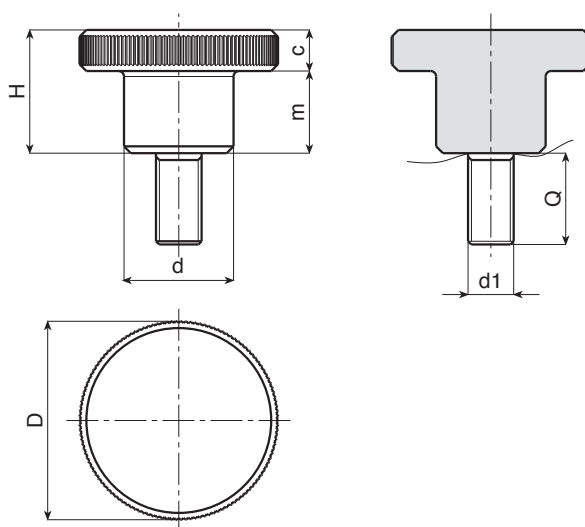
To be specified with the order.

STUD:

Threaded stud in the steel
with tolerance class of 6G.

SPECIAL REQUESTS:

- It is possible to supply the stud with different lengths, on request and for quantities.



Art.	d	D	H	m	c	d1	Q	Weight (gr)
W46411.SM03X...	6	11	8	5	3	M03	10-16	4-4,2
W46415.SM04X...	8	15	10	6	4	M04	10-16-20-25	7,8-8,2-8,6-8,9
W46419.SM05X...	10	19	12	8	4	M05	10-16-20-25-30	15-15,6-16-16,5-17
W46423.SM06X...	12	23	15	10	5	M06	16-20-25-30-35	27,5-28,2-29-29,8-30,6
W46429.SM08X...	16	29	18	12	6	M08	16-20-25-30-40	55-56-57,5-59-62
W46435.SM10X...	20	35	23	15	8	M10	20-25-30-35-40	107-109,5-112-114,5-117

In the two points .. of the code insert the desired colour and stud length.

KNURLED METAL HANDWHEEL WITH THREADED HOLE

MATERIAL:

Steel with property class 5.8.

SURFACE:

Low roughness turned surface.

STANDARD COLOUR:

H - Nickel-plated (surface treatment).

ALTERNATIVE COLOUR ON REQUEST:

B - Black-oxide (surface treatment).

Z - Galvanised (surface treatment).

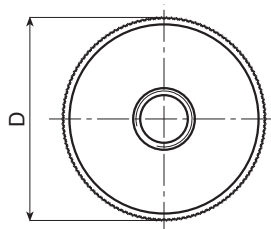
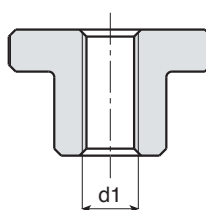
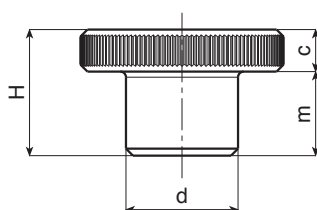
To be specified with the order.

HOLE:

Threaded through hole in the steel with tolerance class of 6H.

SPECIAL REQUESTS:

- It is possible to supply the handwheels with customised hole d1, on request and for quantities.



Art.	d	D	H	m	c	d1	Weight (gr)
W46611.SM03..	6	11	8	5	3	M03	3
W46615.SM04..	8	15	10	6	4	M04	7
W46619.SM05..	10	19	12	8	4	M05	12
W46623.SM06..	12	23	15	10	5	M06	22,5
W46629.SM08..	16	29	18	12	6	M08	45
W46635.SM10..	20	35	23	15	8	M10	87
W46639.SM12..	22	39	25	15	10	M12	121

In the two points .. of the code insert the desired colour.

KNURLED METAL HANDWHEEL WITH SHORT HUB AND THREADED HOLE

MATERIAL:

Steel with property class 5.8.

SURFACE:

Low roughness turned surface.

STANDARD COLOUR:

H - Nickel-plated (surface treatment).

ALTERNATIVE COLOUR ON REQUEST:

B - Black-oxide (surface treatment).

Z - Galvanised (surface treatment).

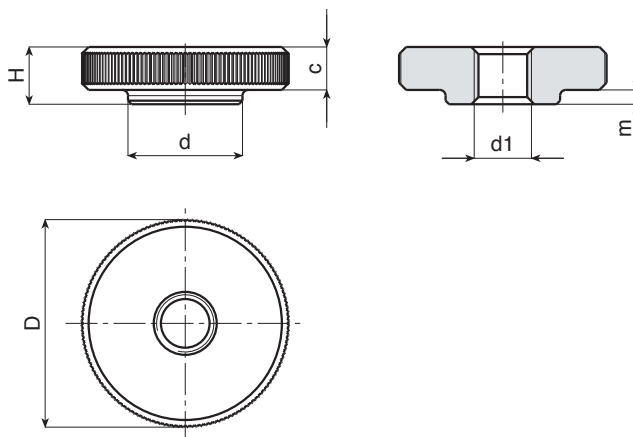
To be specified with the order.

HOLE:

Threaded through hole in the steel
with tolerance class of 6H.

SPECIAL REQUESTS:

- It is possible to supply the handwheels
with customised hole d1, on request
and for quantities.



Art.	d	D	H	m	c	d1	Weight (gr)
W46711.SM03..	6	11	3	-	3	M3	2
W46715.SM04..	8	15	4	-	4	M4	5
W46719.SM05..	10	19	5	1	4	M5	9
W46723.SM06..	12	23	6	1	5	M6	16
W46729.SM08..	16	29	8	2	6	M8	32
W46735.SM10.	20	35	10	2	8	M10	61
W46739.SM12..	22	39	12	2	10	M12	92

In the two points .. of the code insert the desired colour.

ART. W184

STEEL WASHER

MATERIAL:

Steel with property class 3.8.

SURFACE:

Turned surface.

STANDARD COLOUR:

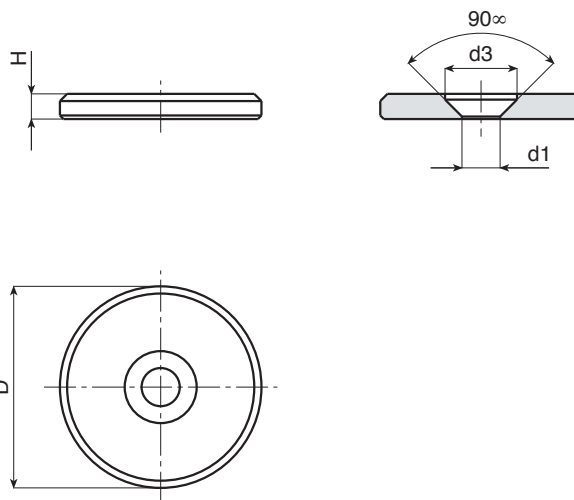
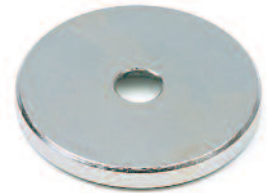
Z - Galvanised (surface treatment).

HOLE:

Smooth right through hole in the steel with tolerance class of H9.

SPECIAL REQUESTS:

- None.



Art.	D	H	d3	d1	Weight (gr)
W18416.VP4,5Z	16	3	8	4,5 x M4	4,5
W18420.VP4,5Z	20	3	8	4,5 x M4	7
W18422.VP5,5Z	22	3,5	10	5,5 x M5	10
W18425.VP5,5Z	25	3,5	10	5,5 x M5	13
W18428.VP5,5Z	28	3,5	10	5,5 x M5	16
W18432.VP6,5Z	32	4	12	6,5 x M6	24
W18436.VP6,5Z	36	4	12	6,5 x M6	31
W18440.VP6,5Z	40	5	12	6,5 x M6	48

W – METAL
SERIES

ROLLMEX

T LEVER WITH MOVABLE HANDLE AND THREADED HOLE

MATERIAL:

Steel with property class 5.8.

SURFACE:

Low roughness turned surface.

COLOUR:

B - Black-oxide (surface treatment).

INSERTS:

- (1) Half-moon shaped ring for black-oxide treated harmonic steel shafts (UNI 7434 type H).
- (2) Galvanised steel spring.
- (3) 7/32 galvanised steel ball.

HANDLE:

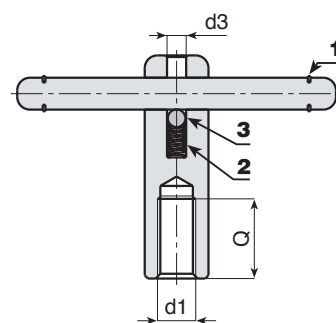
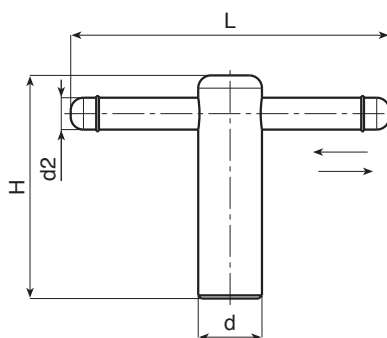
Movable handle locked at stroke end by O-rings.

HOLE:

Female threaded hole made in the steel with tolerance class of 6H.

SPECIAL REQUESTS:

- It is possible to supply the levers with customised hole d1, on request and for quantities.
- It is possible to supply the levers with different surface treatments, on request and for quantities.



Art.	d	L	H	d2	d3	d1	Q	Weight (gr)
W700080.VM10	18	85	62	8	6	M10	25	143
W700105.VM12	20	105	72	10	6	M12	30	207
W700125.VM16	24	125	87	12	6	M16	40	328
W700145.VM20	30	145	97	16	6	M20	45	570

T LEVER WITH FIXED HANDLE AND THREADED HOLE

MATERIAL:

Steel with property class 5.8.

SURFACE:

Low roughness turned surface.

COLOUR:

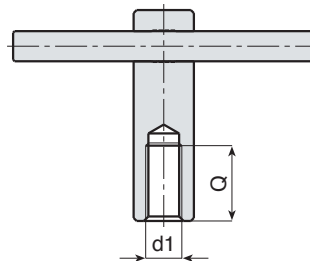
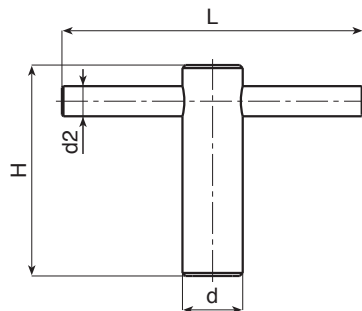
B - Black-oxide (surface treatment)

HANDLE FASTENING METHOD:

Push-fit. Cannot be moved or removed.

HOLE:

Female threaded hole made in the steel with tolerance class of 6H.



SPECIAL REQUESTS:

- It is possible to supply the levers with customised hole d1, on request and for quantities.
- It is possible to supply the levers with different surface treatments, on request and for quantities.

Art.	d	L	H	d2	d1	Q	Weight (gr)
W701085.VM10	18	85	62	8	M10	25	145
W701105.VM12	20	105	72	10	M12	30	208
W701125.VM16	24	125	87	12	M16	40	330
W701145.VM20	30	145	97	16	M20	45	573

ALUMINIUM CONTROL WHEEL WITH SMOOTH HOLE

MATERIAL:

Die cast aluminium.

SURFACE:

Satin finish surface, except for the low roughness turned areas (T).

COLOUR:

H - Nickel-plated (surface treatment).

V - Painted black (RAL 9011).

To be specified with the order.

CENTRE CAP:

H - Nickel plated: black ABS cap (Ral 9011).

V - Painted black: grey ABS cap (Ral 7035).

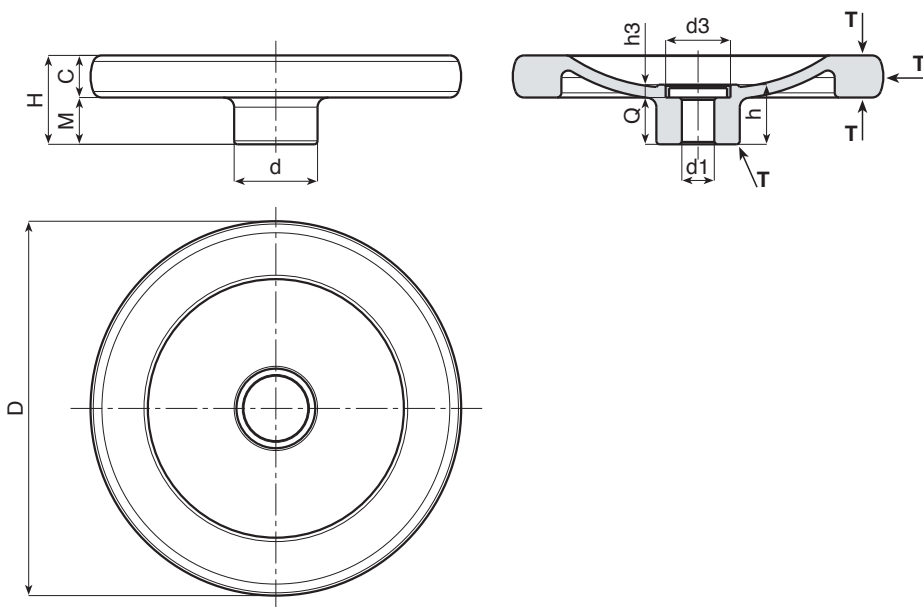
HOLE:

Smooth through hole, remachined with tolerance class of H7.

For fixing systems please refer to the technical notes attached to the catalogue.

SPECIAL REQUESTS:

- It is possible to supply the handwheels with customised hole d1, on request and for quantities.



Ver. H

Art.	d	D	H	m	c	h	h3	d3	d1 H7	Q	Weight (gr)
W296080.AD08..	26	80	26	14	12	21	5,5	20	D08	15,5	142
W296100.AD10..	28	100	28	14	14	21,5	5,5	20	D10	16	240
W296130.AD12..	36	130	35	19	16	25,5	5,5	28	D12	20	435
W296160.AD14..	36	160	38	20	18	25,5	5,5	28	D12	20	685
W296200.AD16..	42	200	44	24	20	31,5	6	34	D16	25,5	1185

In the two points .. of the code insert the desired colour.

ALUMINIUM CONTROL WHEEL WITH SMOOTH HOLE AND REVOLVING HANDLE

MATERIAL:

Die cast aluminium.

SURFACE:

Satin finish surface, except for the low roughness turned areas (T).

COLOUR:

H - Nickel-plated (surface treatment).

V - Painted black (RAL 9011).

To be specified with the order.

CENTRE CAP:

H - Nickel plated: black ABS cap (Ral 9011).

V - Painted black: grey ABS cap (Ral 7035).

SIDE HANDLE:

Revolving handle Art. M129 (see chapter M page 9).

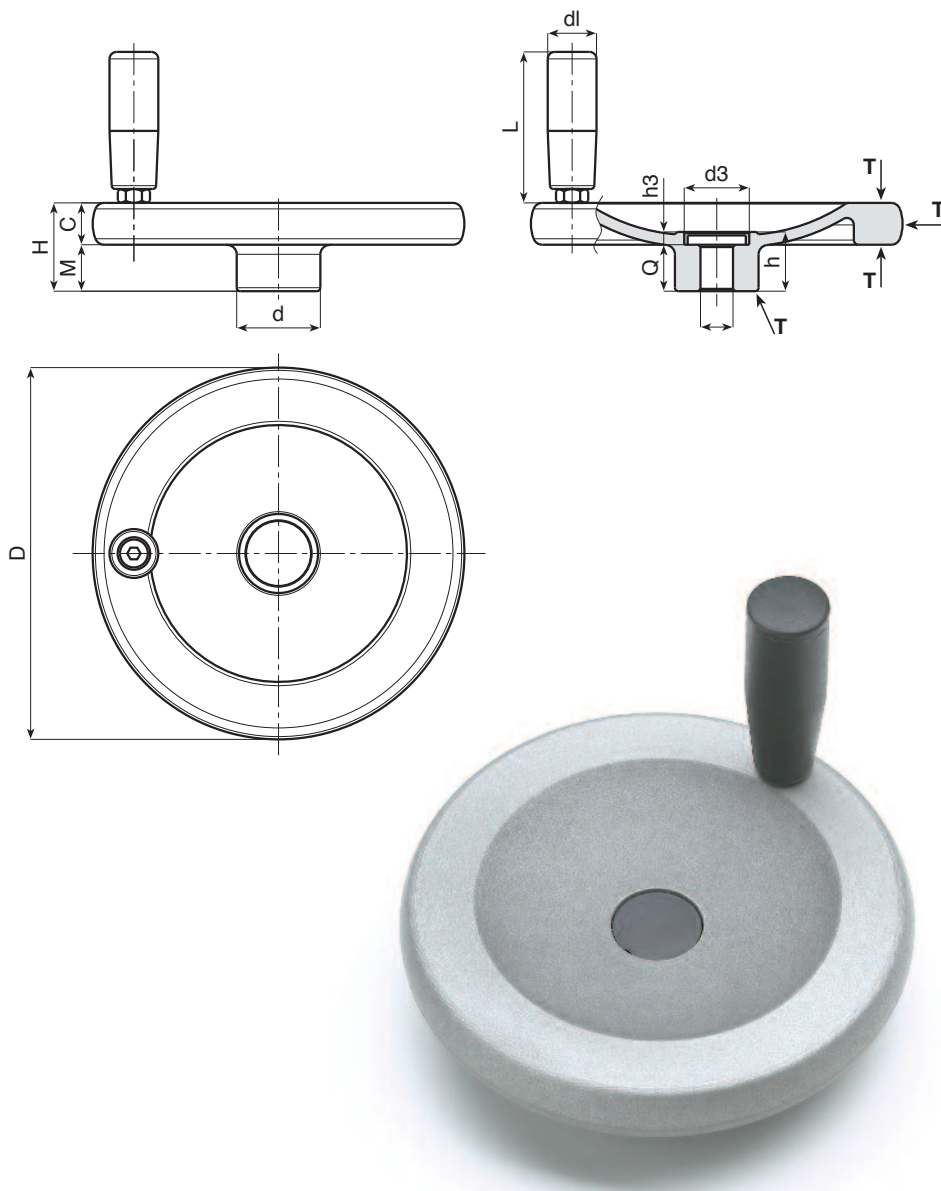
HOLE:

Smooth through hole, remachined with tolerance class of H7.

For fixing systems please refer to the technical notes attached to the catalogue.

SPECIAL REQUESTS:

- It is possible to supply the handwheels with customised hole d1, on request and for quantities.



Art.	d	D	H	m	c	h	h3	d3	d1 H7	Q	dl	L	Weight (gr)
W297080.AD08..	26	80	26	14	12	21	5,5	20	D08	15,5	20	52	185
W297100.AD10..	28	100	28	14	14	21,5	5,5	20	D10	16	20	52	282
W297130.AD12..	36	130	35	19	16	25,5	5,5	28	D12	20	23	62	492
W297160.AD14..	36	160	38	20	18	25,5	5,5	28	D12	20	25	72	778
W297200.AD16..	42	200	44	24	20	31,5	6	34	D16	25,5	25	81	1287

In the two points .. of the code insert the desired colour.

ALUMINIUM CONTROL WHEEL WITH SMOOTH HOLE AND REVOLVING, FOLDING HANDLE

MATERIAL:

Die cast aluminium.

SURFACE:

Satin finish surface, except for the low roughness turned areas (T).

COLOUR:

H - Nickel-plated (surface treatment).

V - Painted black (RAL 9011).

To be specified with the order.

CENTRE CAP:

H - Nickel plated: black ABS cap (Ral 9011).

V - Painted black: grey ABS cap (Ral 7035).

SIDE HANDLE:

Revolving handle and folding Art. M136 (see chapter M on page 10).

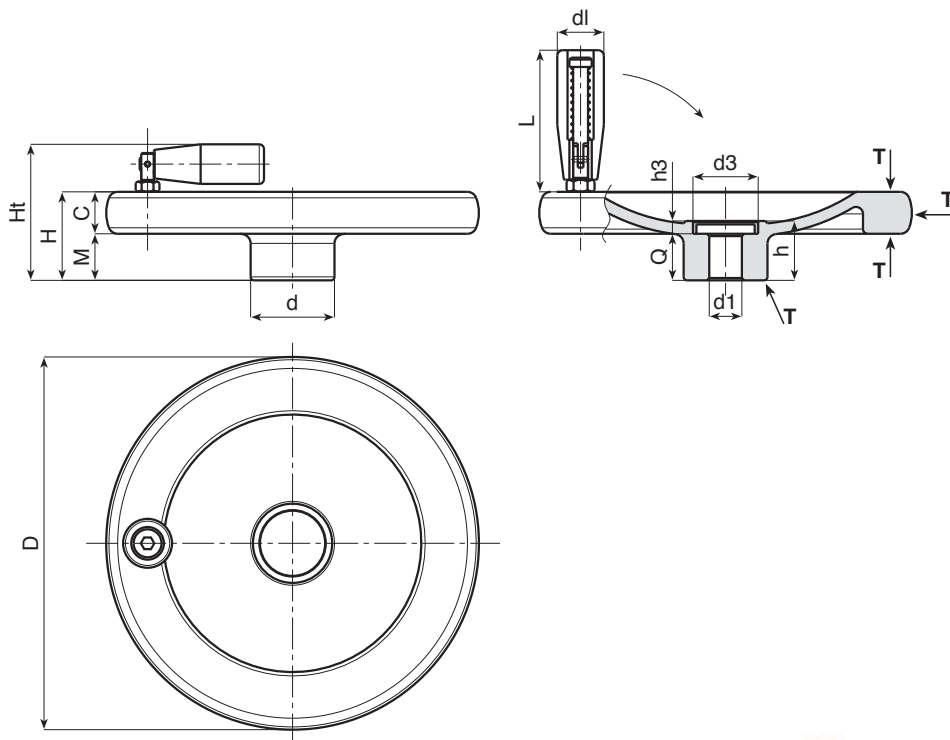
HOLE:

Smooth through hole, remachined with tolerance class of H7.

For fixing systems please refer to the technical notes attached to the catalogue.

SPECIAL REQUESTS:

- It is possible to supply the handwheels with customised hole d1, on request and for quantities.



Ver. H

Art.	d	D	H	Ht	m	c	h	h3	d3	d1 H7	Q	dl	L	Weight (gr)
W298080.AD08..	26	80	26	50	14	12	21	5,5	20	D08	15,5	20	56	181
W298100.AD10..	28	100	28	52	14	14	21,5	5,5	20	D10	16	20	56	279
W298130.AD12..	36	130	35	65	19	16	25,5	5,5	28	D12	20	25	76	506
W298160.AD14..	36	160	38	68	20	18	25,5	5,5	28	D12	20	25	76	756
W298200.AD16..	42	200	44	79	24	20	31,5	6	34	D16	25,5	26	89	1337

In the two points .. of the code insert the desired colour.

KNURLED CONTROL KNOB WITH NUMBERS

MATERIAL:

Aluminium AL6060.

SURFACE:

Low roughness turned surface.

COLOUR:

Black anodized.

CENTRE CAP:

Grey ABS cap (Ral 7035).

GRUB SCREW:

(1) Grub screw M5x6 stainless steel AISI304 with cup point DIN 916.

HOLE:

Smooth through hole, remachined with tolerance class of H7.

NUMBERS:

Numbers engraved on smooth part of the knob. Natural aluminium colour.

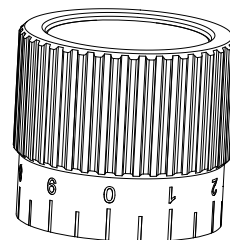
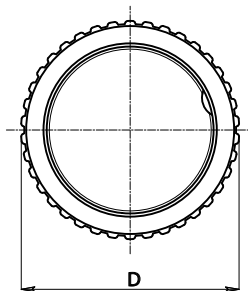
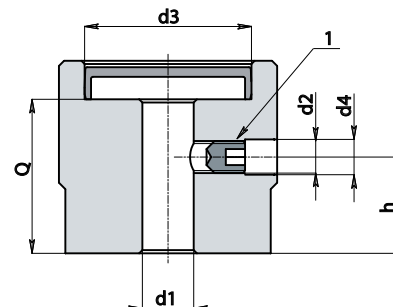
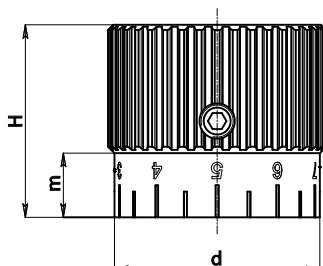
Z1= 0-10 with 20 divisions.

Z2= 0-20 with 20 divisions.



SPECIAL REQUESTS:

- It is possible to supply the knob with customised hole d1, on request and for quantities.
- It is possible to supply the knob with customised numbers, on request and for quantities.



Art.	D	d	H	m	h	d2	d3	d4	d1 H7	Q	Weight (gr)
W99534.AD0813..	34	32	30	10	15	M5	26	5,5	08	24	100

In the two points .. of the code insert the reference for the numbering. (e.g.: Z1= 10 divisions W99534.AD0816Z1)

**W – METAL
SERIES**

© ROLLMEX - Reproduction prohibited




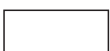














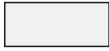








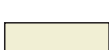


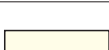

**W – METAL
SERIES**

© ROLLMEX - Reproduction prohibited




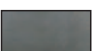
COLOUR CHART

R A L			
COLOUR		RAL	CODE
Black		9011	01
Orange		2004	02
Orange		2011	03
White		9010	04
Blue		5002	05
Blue		5005	06
Blue		5015	07
Blue		5018	19
Blue		5019	21
Blue		5010	22
Yellow		1007	09
Yellow		1021	10
Grey		7024	12
Grey		7035	13
Red		3000	16
Green		6024	17

O T H E R C O L O U R S			
COLOUR		REF.	CODE
White		-	52
Blue		-	53
Blue		pant. 645 U	54
Blue		pant. 300	55
Grey		-	57
Grey		-	59
Grey		NCS 7500	60
Red		-	64
Red		-	65
Natural		-	66
Green		-	70
Brown		-	71
Cream		-	72
Violet		-	73


METAL COLOUR TABLE


A  Anodized

B  Black oxide

D  Dacromet

H  Nickel plated

V  Painted black

Z  Galvanised



WWW.ROLLMEX.FI

ROLLMEX Oy

Takojankatu 4 - 33540 TAMPERE
Push. 010-6661122 - Fax 03-3640072
tampere@rollmex.fi

Karjalankatu 21 - 15140 LAHTI
Push. 010-6661121 - Fax 03-7511026
lahti@rollmex.fi

AUTHORISED RESELLER

**W – METAL
SERIES**

